

New Products

Other Type New Products

Detailed product specifications are available on: us.100y.com.tw



Specifications:

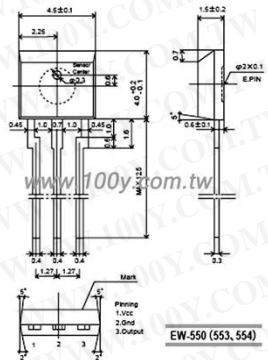
Frequency range:	824~960 & 1710~1990 MHz	Connector:	FME, Mini-UHF, TNC, SMA, SMB
Gain:	3 dB	Impedance:	50 ohm
V.S.W.R:	<1.5:1	Dimension:	103.5(L) X 10.6(W) X 4.5(H) mm
Cable :	RG 174 A/U	Weight:	45g (with cable)

Part No.	Product No.	Description
41228	ETC-8820	GSM Antenna



- Terminal layout in which drive wiring and power wiring do not come across
- Suited for motor control applications with 200V AC input and power supplies

Part No.	Product No.	Manufacturer	Description
42922	EVM31-050A-F	Fuji Elect	3-terminal type 600 volts class power transistor modules



FEATURES

- Effective Performance at Low Magnetic Field
- (Bop:5mT to 20mT)
- 4.5V to 18V Operation
- Highly Resistant to Mechanical Stress
- Stable Operation in Broad Temperature Range
- Compact Size
- Open Collector

Part No.	Product No.	Manufacturer	Description	Other #2
37884	EW500	AsahiKASEI	BIPOLAR HALL EFFECT LATCHES	
37883	EW550	AsahiKASEI	UNIPOLAR HALL EFFECT SWITCHES	4.5V to 18V Operation



The EazyVolt II is a reliable and safe 4-in-1 automatic voltage tester up to 690 V, a resistance tester, a continuity tester and is able to indicate phase rotation by 2 poles. Unique is the full LCD display with bargraph and backlight. The tester is integrated with a torch for testing in places with less lighting. The probe can be connected to the housing firmly.

Specifications

Voltage range	6- 690 Volt AC/DC
LED resolution	bargraph, 8.0 - 15.0V, res = 0.1V 151 - 690V, res = 1V
Accuracy	+3% + 2d
Response time	< 0.1 s LED / < 0.5 s LCD
Resistance measurement	0 ... 2 kOhm (+3% + 10d)
Continuity	< 200 k Ohm
Frequency range	0 ... 65 Hz
Backlight	Including
Power supply	2x 1.5V LR03 batterij
IP-Protection	IP64/IP65 pending
Over voltage category	CATIII / 1000V - CAT IV / 600V
Standards	NEN EN 61010-1, EN 61243-3, EN 61557-7
Probe tips	2 mm. en 4 mm. with thread
Drop proof	1 meter
Test leads	1,2 meter
Dimensions	240 x 56 x 24 mm.
Weight	+ 230 gram (incl. batteries)
Art.no.	626 000 610
Including	Manual and batteries

Part No.	Product No.	Description
47522	EazyVolt II	4-in-1 Voltage Tester



Part No.	Product No.	Description
32212	F508251	INDUCTOR AXIAL

Part No.	Product No.	Manufacturer	Description
43105	FMG26S	SanKen	TO-220



The FP2 uses a backplane designed for easy maintenance. The backplane is selected match the scope of control, and various units can be placed on it in a flexible configuration. Units can be added and removed individually, making it easy to accommodate changes and to carry out maintenance.

Part No.	Product No.	Manufacturer	Description
47990	FP2-Y64T	Panasonic	Programmable Controller FP2 Series



Part No.	Product No.	Manufacturer	Description
24776	FP556ms	BenQ	15"LCD purple+bugle

