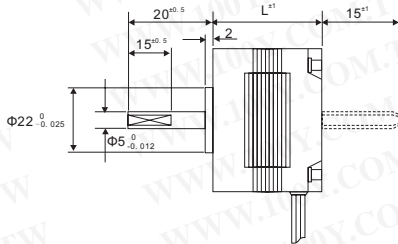
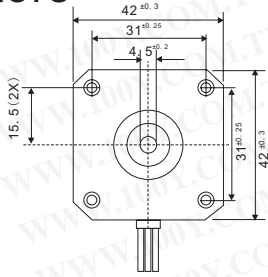


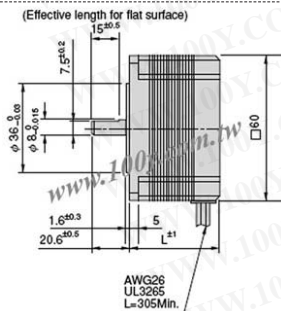
Electronic Kits & I/O Cards & Motors

Stepper Motors

Detailed product specifications are available on: us.100y.com.tw



Part No.	Product No.	Manufacturer	Description	Degree(°)	Driver Volt.(Vdc)	Current(A)	(Ω)
38796	TS3617N11E1	TAMAGAWA	2 PHASE STEP MOTOR	1.8	4.0V	0.95A	4.2
38797	TS3617N11E2	TAMAGAWA	2 PHASE STEP MOTOR	1.8	9.6V	0.4A	24
38798	TS3617N11E3	TAMAGAWA	2 PHASE STEP MOTOR	1.8	12V	0.3A	40
38799	TS3617N12E4	TAMAGAWA	2 PHASE STEP MOTOR	1.8	4.0V	1.2A	3.3
38800	TS3617N12E5	TAMAGAWA	2 PHASE STEP MOTOR	1.8	6.4V	0.8A	8
38801	TS3617N12E6	TAMAGAWA	2 PHASE STEP MOTOR	1.8	12V	0.4A	30
38802	TS3617N12E7	TAMAGAWA	2 PHASE STEP MOTOR	1.8	24V	0.2A	120
38813	TS3617N13E10	TAMAGAWA	2 PHASE STEP MOTOR	1.8	12V	0.4A	30
38811	TS3617N13E8	TAMAGAWA	2 PHASE STEP MOTOR	1.8	4.0V	1.2A	3.3
38812	TS3617N13E9	TAMAGAWA	2 PHASE STEP MOTOR	1.8	7.2V	0.8A	9
38782	TS3617N1E1	TAMAGAWA	2 PHASE STEP MOTOR	1.8	4.0V	0.95A	4.2
38784	TS3617N1E2	TAMAGAWA	2 PHASE STEP MOTOR	1.8	9.6V	0.4A	24
38785	TS3617N1E3	TAMAGAWA	2 PHASE STEP MOTOR	1.8	12V	0.3A	40
38788	TS3617N2E4	TAMAGAWA	2 PHASE STEP MOTOR	1.8	4.0V	1.2A	3.3
38789	TS3617N2E5	TAMAGAWA	2 PHASE STEP MOTOR	1.8	6.4V	0.8A	8
38790	TS3617N2E6	TAMAGAWA	2 PHASE STEP MOTOR	1.8	12V	0.4A	30
38791	TS3617N2E7	TAMAGAWA	2 PHASE STEP MOTOR	1.8	24V	0.2A	120
38795	TS3617N3E10	TAMAGAWA	2 PHASE STEP MOTOR	1.8	12V	0.4A	30
38793	TS3617N3E8	TAMAGAWA	2 PHASE STEP MOTOR	1.8	4.0V	1.2A	3.3
38794	TS3617N3E9	TAMAGAWA	2 PHASE STEP MOTOR	1.8	7.2V	0.8A	9



- Operating temperature range : -20 ~ +50 °C
- Insulation resistance : 100 M Ω, Min. by DC 500 V Megohm meter
- Dielectric strength : AC 500 V, 1 minute
- End play : 0.075 mm, Max. at the load of 9.8 N (1 kgf)
- Radial play : 0.025 mm, Max. at the load of 4.9 N (0.5 kgf)
- Permissible temperature rise : 80 deg, Max. by resistance method

Part No.	Product No.	Manufacturer	Description	Driver Volt.(Vdc)	Current(A)	(Ω)
37189	TS3624N1E1	TAMAGAWA	5 PHASE STEP MOTOR	0.75V	1.95A	2.6
37201	TS3624N1E2	TAMAGAWA	5 PHASE STEP MOTOR	1.12V	01.4A	0.8
38774	TS3624N21E1	TAMAGAWA	5 PHASE STEP MOTOR	0.75V	1.95A	2.6
38776	TS3624N21E1	TAMAGAWA	5 PHASE STEP MOTOR	1.12V	1.4A	0.8
38778	TS3624N21E2	TAMAGAWA	5 PHASE STEP MOTOR	1.12V	1.4A	0.8
38777	TS3624N22E3	TAMAGAWA	5 PHASE STEP MOTOR	2.55V	0.75A	3.4
38779	TS3624N22E4	TAMAGAWA	5 PHASE STEP MOTOR	1.54V	1.4A	1.1
38780	TS3624N23E5	TAMAGAWA	5 PHASE STEP MOTOR	2.52V	1.4A	1.8
38781	TS3624N23E6	TAMAGAWA	5 PHASE STEP MOTOR	1.82V	2.8A	0.65
38769	TS3624N2E3	TAMAGAWA	TAMAGAWA_TS3624.PDF	2.55V	0.75A	3.4
38770	TS3624N2E4	TAMAGAWA	5 PHASE STEP MOTOR	1.54V	1.4A	1.1
38771	TS3624N3E5	TAMAGAWA	5 PHASE STEP MOTOR	2.52V	1.4A	1.8
38772	TS3624N3E6	TAMAGAWA	5 PHASE STEP MOTOR	1.82V	2.8A	0.65



Part No.	Product No.	Manufacturer	Description	Degree(°)	Driver Volt.(Vdc)	Current(A)	(Ω)	Weight
38839	TS3653N11E2	TAMAGAWA	2 PHASE STEP MOTOR	1.8	2.8V	2A	1.4	
38840	TS3653N11E3	TAMAGAWA	2 PHASE STEP MOTOR	1.8	1.9V	3A	0.63	
38841	TS3653N12E4	TAMAGAWA	2 PHASE STEP MOTOR	1.8	7.2V	1A	7.2	
38842	TS3653N12E5	TAMAGAWA	2 PHASE STEP MOTOR	1.8	3.6V	2A	1.8	0.7Kg
38843	TS3653N12E6	TAMAGAWA	2 PHASE STEP MOTOR	1.8	2.3V	3A	0.75	
38844	TS3653N13E7	TAMAGAWA	2 PHASE STEP MOTOR	1.8	8.2V	1A	8.2	
38845	TS3653N13E8	TAMAGAWA	2 PHASE STEP MOTOR	1.8	4.5V	2A	2.25	
38846	TS3653N13E9	TAMAGAWA	2 PHASE STEP MOTOR	1.8	3V	3A	1	
38847	TS3653N14E12	TAMAGAWA	2 PHASE STEP MOTOR	1.8	2.2V	5A	0.44	
48711	TS3653N181E8	TAMAGAWA	2 PHASE STEP MOTOR	1.8	4.5V	2A	2.25	



T E L : Taiwan: 886-3-5753170
 F A X : Taiwan: 886-3-5753172
 E-mail : Taiwan: us_sale@100y.com.tw

Shenzhen: 86-755-83298787
 Shenzhen: 86-755-83640655
 Shenzhen: 100y@163.com

Shanghai: 86-21-54151736
 Shanghai: 86-21-64605107
 Shanghai: 100y-1@163.com