

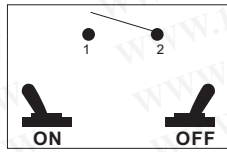
# Switches & Control Gear

## Toggle Switch

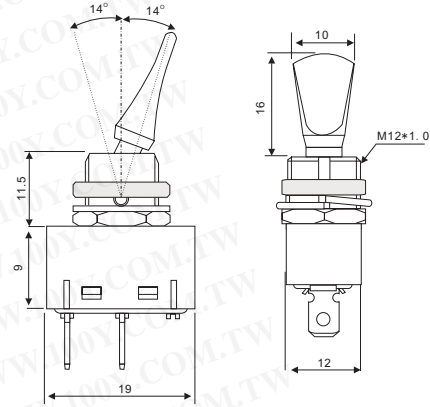
Detailed product specifications are available on: [us.100y.com.tw](http://us.100y.com.tw)



Rating	
6A 125V AC	
3A 250V AC	
Contact resistance	
50o ohm Max	
Insulation resistance	
DC 500V 100o ohm Min	
Dielectric strength	
AC 1500V 1 minute	
Cut-out	

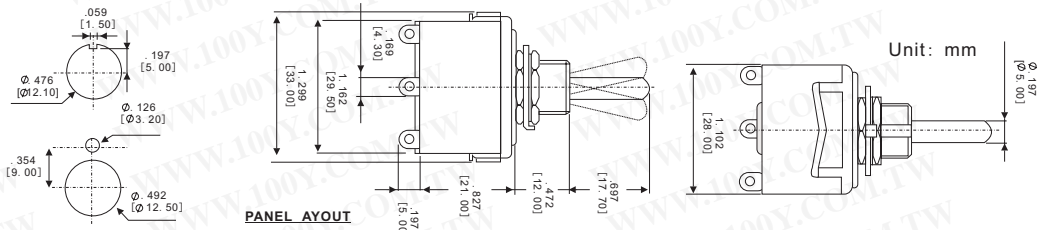


Color: ●  
Unit: mm



TERMINAL	
0 2	.187" SQ

Part No.	Product No.	Description	No. of Pos.	Volt./Current	Color	Type
14407	R13-412A1-HWR	Toggle Switch	2P SPDT 4.8*0.8t Quick connect	10A125VAC/6A250VAC	All Black	SPST ON-OFF



Part No.	Product No.	Description	No. of Pos.	Volt./Current	Type
5650	Y7033-K1C3T1	Toggle Switch	9P3	10A/250Vac	ON-OFF-ON

## Micro Switches

Detailed product specifications are available on: [us.100y.com.tw](http://us.100y.com.tw)

### Micro Switch



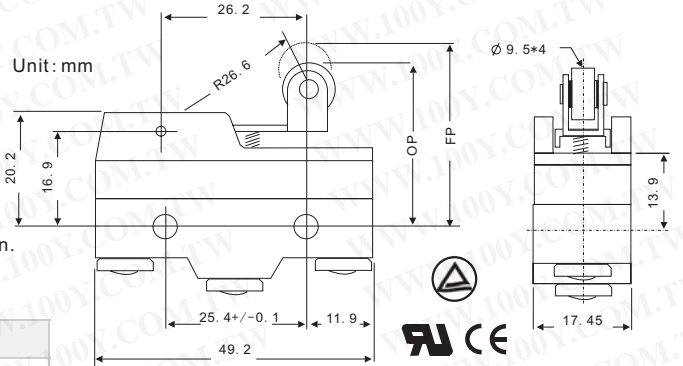
OF	160 g
RF min	42 g
PT max	2.7 mm
OT min	2.4 mm
MD max	0.5 mm
OP	30.2 +/- 10.4 mm
15A 125VAC or 250VAC	

#### CHARACTERISTICS:

Contact resistance: 15mΩ max. (Initial)  
Insulation resistance: 100MΩ min. (at 500VDC)  
Dielectric strength: 1,000VAC 50/60Hz for 1 minute

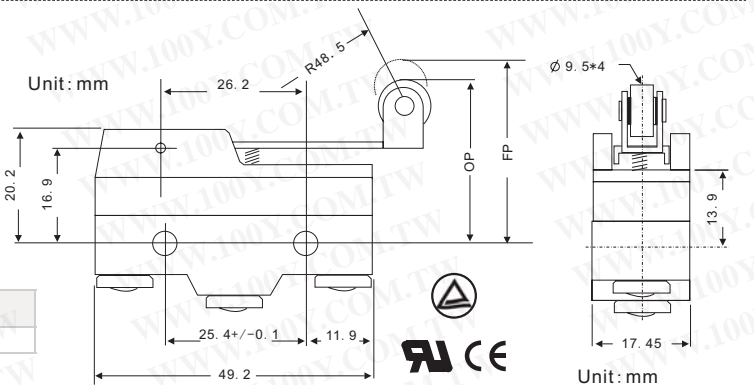
**Service life:**  
Mechanically: 1,000,000 operations min.  
Electrically: 100,000 operations min.

Part No.	Product No.	Description	A/VAC
11188	5101	Micro Switch	15A/125/250Vac



OF	100 g
RF min	22 g
PT max	7.1 mm
OT min	4 mm
MD max	1.02 mm
OP	30.2 +/- 0.8 mm
15A 125VAC or 250VAC	

Part No.	Product No.	Description	A/VAC
3587	5102	Micro Switch	15A/125/250Vac



- We provide a wide range of products to development and maintenance engineers in all type of business
- If you cannot find the components you want on the catalogue, please call us.

Taiwan: 886-3-5753170  
Shanghai: 021-54151736 Shenzhen: 0755-83298787

**Centenary Materials**  
Waiting for your phone call



T E L : Taiwan: 886-3-5753170  
F A X : Taiwan: 886-3-5753172  
E-mail: Taiwan: [us\\_sale@100y.com.tw](mailto:us_sale@100y.com.tw)

Shenzhen: 86-755-83298787  
Shenzhen: 86-755-83640655  
Shenzhen: [100y@163.com](mailto:100y@163.com)

Shanghai: 86-21-54151736  
Shanghai: 86-21-64605107  
Shanghai: [100y-1@163.com](mailto:100y-1@163.com)