

Switches & Control Gear

Slide Switch

Detailed product specifications are available on: us.100y.com.tw



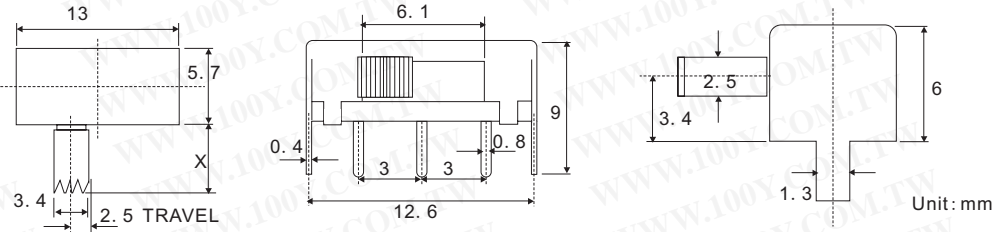
SPECIFICATIONS:

- CONTACT RATING: 5A with resistive @125VAC or 28VDC
2A with resistive load @250 VAC
- CONTACT RESISTANCE : 10mΩ max. initial@2-4VDC, 100mA for both coin silver and gold plated contacts.
- ELECTRICAL LIFE : 30,000 actuations at full load
- INSULATION RESISTANCE : 1,000MΩ Min.
- DIELECTRIC STRENGTHS : 1,000 V RMS @ sea level
- OPERATION TEMPERATURE : -30°C to 85°C

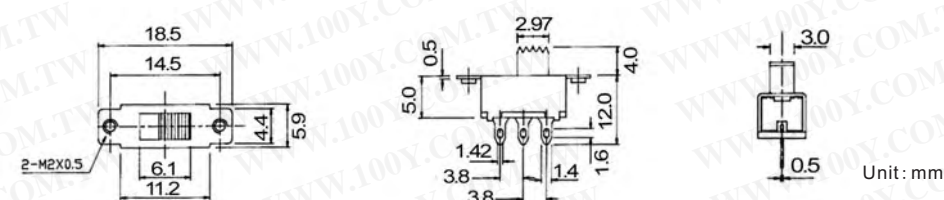
MATERIALS:

- CASE-dially phthalate(DAP)
- HOUSING-Stainless Steel
- SLIDE HANDLE-Nylon
- CONTACTS-Coin silver,silver plated

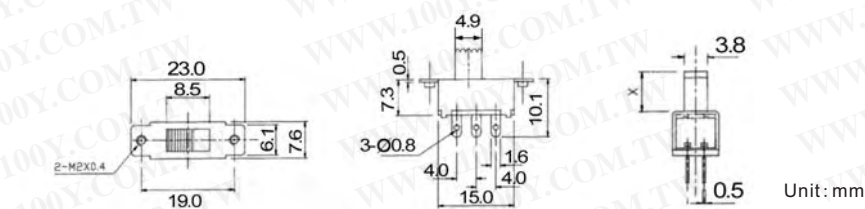
Part No.	Product No.	Description	Type	A/Vac
10745	5MS1S120M6QE	Slide Switch	ON-OFF	5A/125Vac



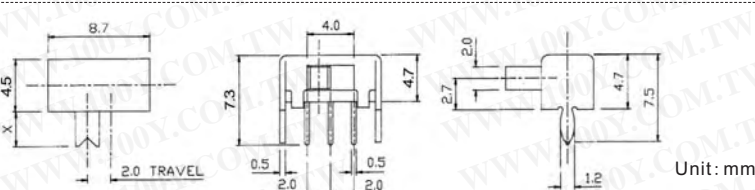
Part No.	Product No.	Description
12696	HSS-1212-L7	Slide Switch



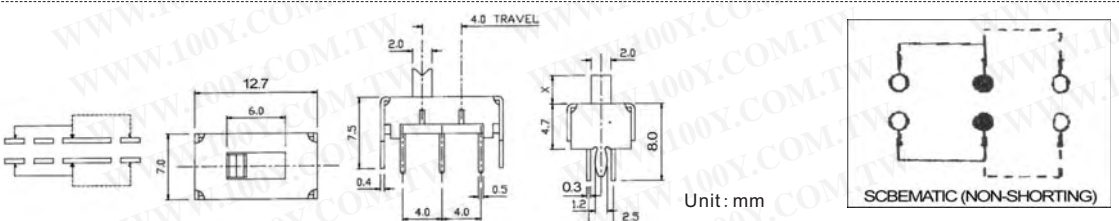
Part No.	Product No.	Description	Type	Pins /Terminal Type
7840	HSS-1216-L4	Slide Switch	ON-OFF	3P



Part No.	Product No.	Description	Type	Pins /Terminal Type
7841	HSS-2225-L6	Slide Switch	ON-OFF	6P3



Part No.	Product No.	Description	Type	A/Vac	Pins /Terminal Type	Spec
11334	SK-12D02V2	Slide Switch	ON-ON(1P2T)	0.3A/DC50V	3P2	8.7*4.5*7.5mm



Part No.	Product No.	Description	Pins /Terminal Type
12971	SS-22H06-V4	Slide Switch	6P

