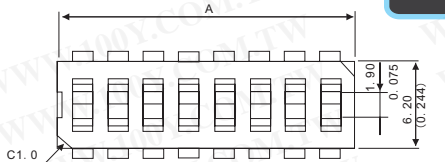


Switches & Control Gear

In-Line Switches

Detailed product specifications are available on: us.100y.com.tw



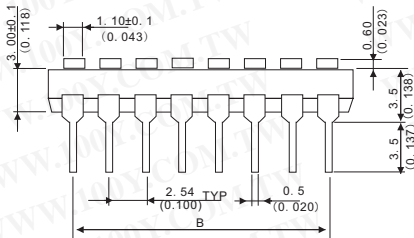
ELECTRICAL

Electrical life: 2000 operation cycles per switch 24VDC, 25mA.
 Non-Switching Rating: 100mA, 50 VDC
 Switching Rating: 25mA, 24VDC.
 Dielectric Strength: 500VAC/1 minute.
 Capacitance: 5pF max.
 Circuit: Single pole single throw

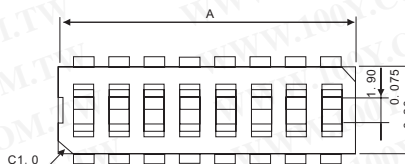
MECHANICAL

Mechanical life: 2000 operations per cycle switch
 Operation Force: 600gf max.
 Stroke: 0.9mm
 Operation Temp: -25° C to +70° C
 Storage Temp: -40° C to +85° C

PROD NO.	NO. OF POS	DIMA	
RI/RIR-03	03	8.56	0.337
RI/RIR-04	04	11.1	0.437
RI/RIR-06	06	16.18	0.637
RI/RIR-08	08	21.26	0.837



Part No.	Product No.	Description	No. of pos.
17515	RI-04-H	IC Type DIP Switches	4-P
17516	RI-06-H	IC Type DIP Switches	6-P
17517	RI-08G-H	IC Type DIP Switches	8-P
50471	RI-10G-H	IC Type DIP Switches	10-P
3594	RIR-03-S	DIP Switches	3-P
3595	RIR-04-S	IC Type DIP Switches	4-P
3596	RIR-06-S	IC Type DIP Switches	6-P
3597	RIR-08G-S	IC Type DIP Switches	8-P
50381	RIR-10G-S	IC Type DIP Switches	10-P



SPECIFICATION

ELECTRICAL

Electrical life: 2000 operation cycles per switch 24VDC, 25mA.
 Non-switching rating: 100mA, 50 VDC
 Switching rating: 25mA, 24VDC.
 Contact resistance: (a) 50mΩ max. at initial
 (b) 100mΩ max. after life test.

Insulation resistance: 100MΩ min. (at 500VDC)

Capacitance: 5pF max.

Circuit: Single pole single throw

MECHANICAL

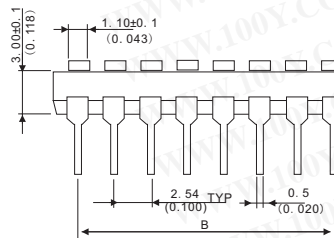
Mechanical life: 2000 operations per cycle switch

Shock: 0.9mm

Operating force: 600gf max.

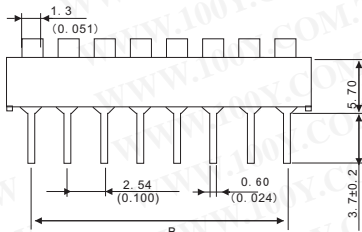
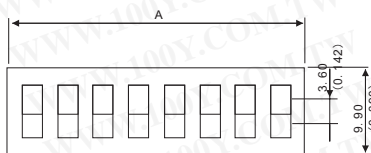
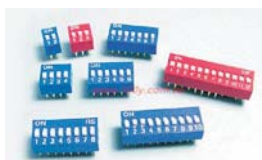
Operation Temp: -25° C to +70° C

Storage Temp: -40° C to +85° C



PROD NO.	NO. OF POS	DIMA	
RM/RMR-04	04	11.1	0.437
RM/RMR-05	05	13.64	0.537
RM/RMR-06	06	16.18	0.637
RM/RMR-07	07	18.72	0.737
RM/RMR-08	08	21.26	0.837
RM/RMR-10	10	26.34	1.037

Part No.	Product No.	Manufacturer	Description	No. of pos.
17248	RM-04	RESON	SURFACE MOUNTING TYPE DIP SWITCH	4P
18694	RM-05	RESON	SURFACE MOUNTING TYPE DIP SWITCH	5P
17249	RM-06	RESON	SURFACE MOUNTING TYPE DIP SWITCH	6P
17250	RM-07	RESON	SURFACE MOUNTING TYPE DIP SWITCH	7P
17251	RM-08	RESON	SURFACE MOUNTING TYPE DIP SWITCH	8P
17252	RM-10		SURFACE MOUNTING TYPE DIP SWITCH	10P



SPECIFICATION

ELECTRICAL:

Electrical life: 2000 operation cycles per switch 24VDC, 25mA.

Non-switching rating: 100mA, 50 VDC

Switching rating: 25mA, 24VDC.

Contact resistance: (a) 50mΩ max. at initial

(b) 100mΩ max. after life test.

Insulation resistance: 100MΩ min. (at 500VDC)

Capacitance: 5pF max.

Circuit: Single pole single throw

MECHANICAL

Mechanical life: 2000 operations per cycle switch
 Operating force: 800gf max.

Shock: 2.0mm

Operation Temp: -25° C to +70° C

Storage Temp: -40° C to +85° C

PROD NO.	NO. OF POS	DIMA	
RSR/RS-01	01	3.84	0.151
RSR/RS-02	02	6.08	0.239
RSR/RS-03	03	8.92	0.315
RSR/RS-04	04	11.16	0.439
RSR/RS-05	05	13.70	0.539
RSR/RS-06	06	16.24	0.639
RSR/RS-07	07	19.08	0.751
RSR/RS-08	08	21.32	0.839
RSR/RS-09	09	24.16	0.951
RSR/RS-10	10	26.40	1.039
RSR/RS-12	12	31.48	1.239

Part No.	Product No.	Description	No. of pos.
22095	RS-01-B	DIP Switches	01-P



T E L : Taiwan: 886-3-5753170
 F A X : Taiwan: 886-3-5753172
 E-mail: Taiwan: us_sale@100y.com.tw

Shenzhen: 86-755-83298787
 Shenzhen: 86-755-83640655
 Shenzhen: 100y@163.com

Shanghai: 86-21-54151736
 Shanghai: 86-21-64605107
 Shanghai: 100y-1@163.com