

Sensors & Transducers

Other Type Sensors

Detailed product specifications are available on: us.100y.com.tw

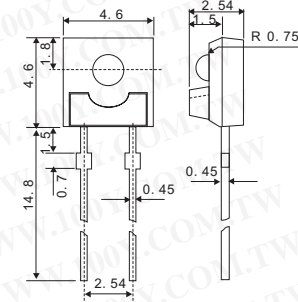


SPECIFICATIONS:

Detector type: twin
 Element size (mm²): 2.0x1.0
 Window material: Si filter
 Pass band: 7-14 (um)
 Signal sensitivity: Typ 2.7 (420°K, 1Hz)

Operating voltage (V): 2.2-15 (Drain-ground)
 Operating current (μA) Typ: 11-15 (V₀=5V, R_s=47KΩ, 25°C)
 Operating temperature °C: -20+60
 Storage temperature (°C): -35+80

Part No.	Product No.	Description	Type
10308	PIR-145	Pyroelectric Sensor	TTP



FEATURES:

- Linear output conforming to illuminance
- Lead-pin package
- Low dark current: 10 nA typ.
- Lead-free soldering
- Environmental friendly Silicon chip

ELECTRO-OPTICAL CHARACTERISTICS

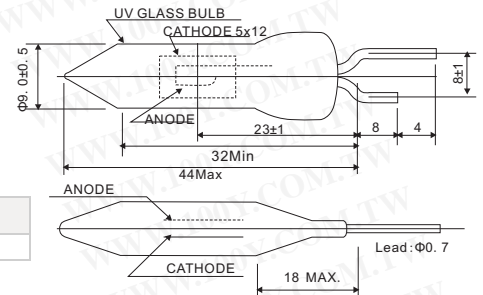
Item	Symbol	Conditions	Typ.	Max.	Unit
Collector · Emitter voltage	V _{CE0}	I _{CE} =100μA		10	V
Dark current	I _{CE0}	V _{CE} =5V	10	500	nA
Spectral response range	λ		400-650		nm
Peak wavelength	λ _p		560		nm
Light current	I _L	V _{ce} =5V, 10lx (A光源)	100		μA

Part No.	Product No.	Manufacturer	Description
39574	PT23GP11	KODENSHI	Daylight Sensor(400-650nm)



APPLICATIONS

- Flame detectors for gas/oil lighters and matches
- Fire alarms
- Combustion monitors for burners
- Inspection of ultraviolet leakage
- Detection of discharge
- Ultraviolet switching



Part No.	Product No.	Manufacturer	Description	Type
10174	R2868	HAMAMATSU	Hamamatsu_UV TRON ultraviolet detector	R2868



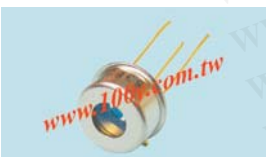
S1087/S1133 series are ceramic package photodiodes that offer low dark current. Ceramic package used is light-impervious, so no stray light can reach the active area from the side or backside. This allows reliable optical measurements in the visible to near infrared range, over a wide dynamic range from low light levels to high light levels.

Features

- S1133: For visible range
- General ratings/Absolute maximum ratings

Type No.	Effective active area (mm ²)	Absolute maximum ratings		
		Reverse voltage VR Max.(V)	Operating temperature Topr (°C)	Storage temperature Tstg (°C)
S1133	6.6	10	-10 to +60	-20 to +70

Part No.	Product No.	Manufacturer	Description	Type
37543	S1087	HAMAMATSU	HAMAMATSU_Ceramic package photodiode with low dark current	S1087 Si photodiode
37544	S1087-01	HAMAMATSU	HAMAMATSU_Ceramic package photodiode with low dark current	S1087 Si photodiode
10155	S1133	HAMAMATSU	HAMAMATSU_Ceramic package photodiode with low dark current	S1133 Si photodiode



Features

- High sensitivity
- High reliability
- High-speed response
- Low capacitance

Applications

- Optical measurement equipment
- Analytical equipment, etc.

Part No.	Product No.	Manufacturer	Description	Type
41239	S1223-01	HAMAMATSU	HAMAMATSU_Si Pin Photodiode	320-1100nm



Features

- Plastic package (6 × 8 mm)
- Spectral response range
- S6428-01: 400 to 540 nm (λ_p=460 nm)
- S6429-01: 480 to 600 nm (λ_p=540 nm)
- S6430-01: 590 to 720 nm (λ_p=660 nm)
- Insensitive to near IR range
- High sensitivity
- S6428-01: 0.22 A/W Typ. (λ=λ_p)
- S6429-01: 0.27 A/W Typ. (λ=λ_p)
- S6430-01: 0.45 A/W Typ. (λ=λ_p)
- Low dark current

Applications

- White balance adjustment
- Color identification
- Projector and TV brightness level detection
- Color control
- Light source color temperature detection

S6428-01, S6429-01 and S6430-01 are color sensors designed to respectively detect monochromatic colors of blue (λ_p=460 nm), green (λ_p=540 nm) and red (λ_p=660 nm).

