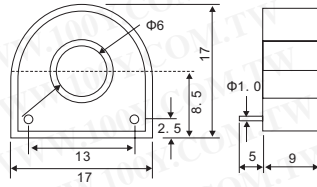


Sensors & Transducers

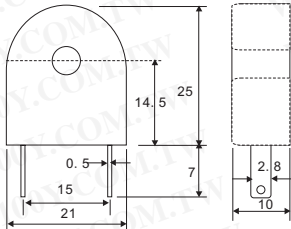
Current Transducers

Detailed product specifications are available on: us.100y.com.tw



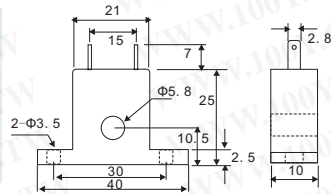
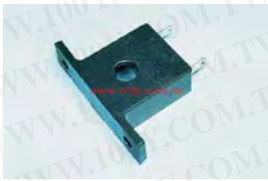
- Working temperature: -20°C~+75°C
- Reserve temperature: -30°C~+90°C
- Weight: 5g

Part No.	Product No.	Manufacturer	Description	Type
48272	CTL-6-L	U_RD	Current Transducers	CTL-6-L



- Working temperature: -20°C~+75°C
- Reserve temperature: -30°C~+90°C
- Weight: 12g

Part No.	Product No.	Manufacturer	Description
18416	CTL-6-P-H	U_RD	Current Transducers



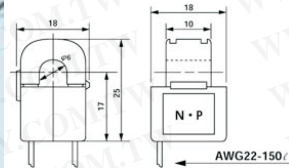
CTL-6-S-H

- Rating current: 0.1~80Arms (50/60Hz)
- Working temperature: -20°C~+75°C
- Reserve temperature: -30°C~+90°C
- Weight: 12g

CTL-6-S-Z

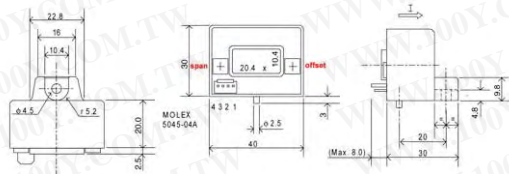
- Working temperature: -20°C~+75°C
- Reserve temperature: -30°C~+90°C
- Weight: 13g

Part No.	Product No.	Manufacturer	Description	Type
17307	CTL-6-S-H	U_RD	Current Transducers	CT
39735	CTL-6-S-Z	U_RD	Current Transducers	CTL-6-S-Z



- Working temperature: -20~+50°C
- Reserve temperature: -30~+90°C
- Weight: 12g

Part No.	Product No.	Manufacturer	Description	Type
39541	CTL-6-S32-8F-CL	U_RD	Clamp-On CT	CT



Features

- Hall effect measuring principle
- Galvanic isolation between primary and secondary circuit
- Isolation voltage 3000 V~
- Low power consumption
- Extended measuring range (3 x I_{PN})
- Insulated plastic case made of polycarbonate PBT recognized according to UL 94-V0

Advantages

- Easy mounting
- Small size and space saving
- Only one design for wide current ratings range
- High immunity to external interference.

Applications

- AC variable speed drives
- Static converters for DC motor drives
- Battery supplied applications
- Uninterruptible Power Supplies (UPS)
- Switched Mode Power Supplies (SMPS)
- Power supplies for welding applications.

Supply voltage (± 5 %)	± 15V
Current consumption	± 15mA
Load resistance	> 1kΩ
Ambient operating temperature	- 10 .. + 80°C
Ambient storage temperature	- 25 .. + 80°C

Part No.	Product No.	Manufacturer	Description	Type
41434	HAS100-S	LEM	LEM_Current Transducer for Measuring of DC, AC and Pulse Current	HAS100-S



FEATURES

- Hall effect measuring principle
- Galvanic isolation between primary and secondary circuit
- Isolation voltage 2500V
- Low power consumption
- Wide power supply: ±12V to ±15V
- Primary bus bar option for 50A and 100A version for ease of connection

APPLICATIONS

- AC variable speed drives
- Static converters for DC motor drives
- Battery supplied applications
- Uninterruptible Power Supplies (UPS)
- Switched Mode Power Supplies (SMPS)
- Power supplies for welding applications.

