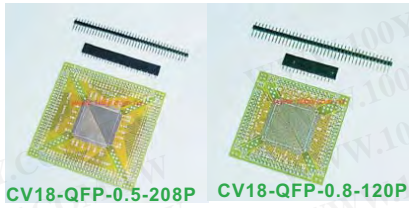


Sockets & Accessories

QFP to DIP PCB Adaptors

Detailed product specifications are available on: us.100y.com.tw

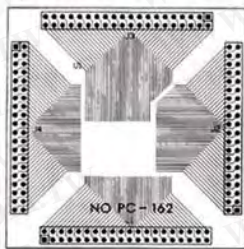
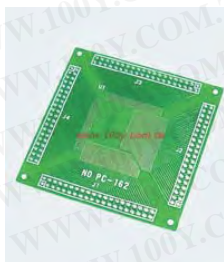


Part No.	Product No.	Description	Pins
6403	CV18-QFP-0.5-208P	QFP(0.5mm Pitch) to DIP PCB Adaptor	208Pins
11154	CV18-QFP-0.8-120P	QFP(0.8mm-Pitch) to DIP PCB Adaptor	120Pins



IC SIZE: 30.6*3.06
 PITCH: 0.5
 REMARK: OTQ-208-0.5 (28.5*28.5)
 TQFP 208 PIN and IS0010-Q208-00 combine

Part No.	Product No.	Description	Pins	Suitable IC package
10871	FPQ-208-0.5-09 PCB Adaptor	QFP 208Pin to DIP PCB Adaptor	208Pins	QFP 208Pin



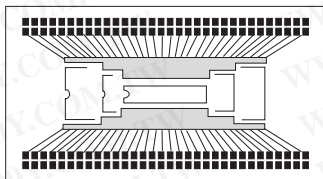
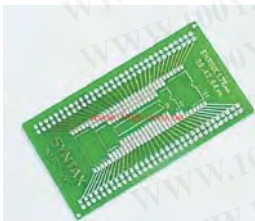
FEATURES OF IC-BOARD SERIES

- Provide easy access to pins on ICs with special pin configurations.
- Easily wires Ribbon Cable for experimentation.
- Board Length.....2-13/16" (71.4mm)
- Board Width.....2-13/16" (71.4mm)
- Double sided
- For RFP,QFP IC with up 162 pins ; spacing 0.02" (0.62mm)

STANDARDS

- FR-4 Epoxy glass base, 0.062" thick.
- Solder-plated, 2-ounce copper.
- Durable conformal coating.
- Gold plated edge connectors.
- Plated through holes.
- Accurate silk-screening & positional markings.
- 0.042" DIA. Hole.
- 0.1" Hole spacing.

Part No.	Product No.	Description
4801	PC-162	QFP to DIP PCB Adaptor 71.4mmL*71.4mmW



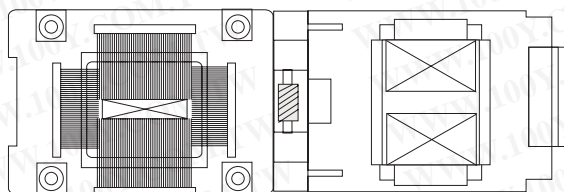
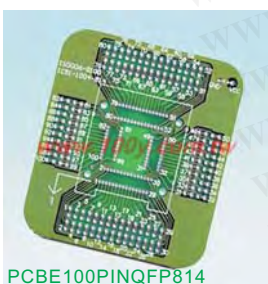
FEATURES OF IC-BOARD SERIES

- Provide easy access to pins on ICs with special pin configurations.
- Easily wires to Ribbon Cable for experimentation.
- Board Length.....3-1/2" (89mm)
- Board Width.....1-7/8" (48mm)
- Double Sided
- For IC DIP with 0.07" (1.78mm) pin spacing (Typing:28, 42, 64pin)

STANDARDS

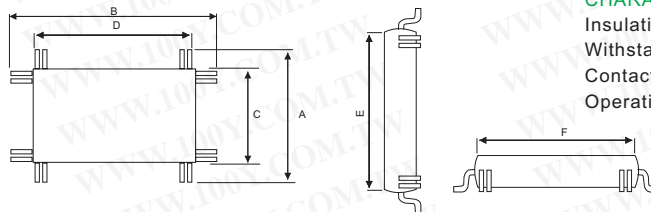
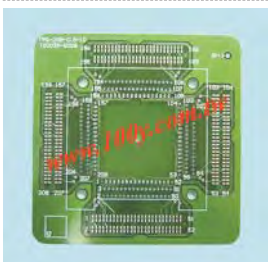
- FR-4 Epoxy glass base, 0.062" thick.
- Solder-plated, 2-ounce copper.
- Durable conformal coating.
- Gold plated edge connectors.
- Plated through holes.
- Accurate silk-screening & positional markings.
- 0.042" DIA. Hole.
- 0.1" Hole spacing.

Part No.	Product No.	Description
6572	PC-645	QFP to DIP PCB Adaptor 1.78mm89mmL*48mmW
12113	PC-646	QFP to DIP PCB Adaptor 1.778mm89Lx48Wmm



ITEM NO. : IS0006-Q100 (814) (CLAM SHELL)
 IC SIZE: 17.9*2.39
 PITCH: 0.65
 REMARK: SOCKET NAME : IC 51-1004-814-2
 SPECIFICATION QFP 100PIN

Part No.	Product No.	Description	Pins	Suitable IC package	Size
28778	PCB128PINQFP03	QFP to DIP PCB	128P	QFP-128PIN	
12186	PCBE100PINQFP814	QFP to DIP PCB Adaptor	100Pins		14*20



CHARACTERISTICS

Insulation resistance: 1,000MΩ minimum at 500VDC
 Withstanding voltage: 700VAC for 1 minute
 Contact resistance: 30mΩ max. at 10mA / 20mV (Initial)
 Operating temperature: PES/PEI -55°C~+170°C
 PSF -40°C~+150°C

MATERIAL

Insulator: PSF/PES/PEI
 Contact: Beryllium copper
 Plating: Gold over nickel

Part No.	Product No.	Description	Suitable IC package	Size
47137	PCBE208PINQFP05	FQP-208P Test Socket	208Pins	QFP



T E L : Taiwan: 886-3-5753170
 F A X : Taiwan: 886-3-5753172
 E-mail: Taiwan: us_sale@100y.com.tw

Shenzhen: 86-755-83298787
 Shenzhen: 86-755-83640655
 Shenzhen: 100y@163.com

Shanghai: 86-21-54151736
 Shanghai: 86-21-64605107
 Shanghai: 100y-1@163.com