

Semiconductors-Discretes

Other_TVS

Detailed product specifications are available on: us.100y.com.tw

Part No.	Product No.	Manufacturer	Description	Power (W)	Stand-off Vrwm	Vbr min	Package
42542	NUP8010MNT1G	ON-Semi.	8 Line Low Capacitance Transient Voltage Suppressor				DFN8
42544	NZL5V6AXV3T1G	ON-Semi.	ESD Protection Dual Common Anode Diodes				SC-89
39722	P6KE120CA		P6KE_TVS	600W			DO-15
39669	PSOT05LC		PROTEK DEVICE_ultralow capacitance TVS array (RoHS)		5V	6V	SOT-23 Marking:05L

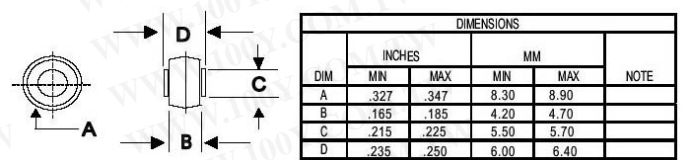
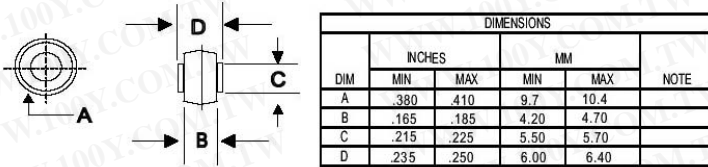
DACO_Button Devices TVS

Detailed product specifications are available on: us.100y.com.tw



BUTTON-AR

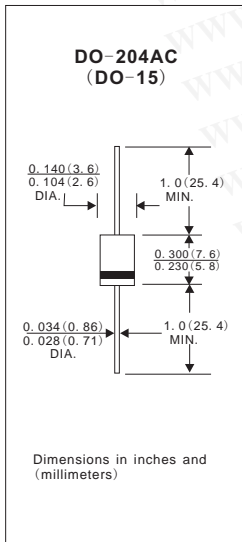
BUTTON-ARS



Part No.	Product No.	Manufacturer	Description	Vrrm/min	Vrrm/max	Io(A)	Package
26807	AR3522	DACO	35A Button_TVS Diode	20V	24V	35A	AR
26808	AR3525	DACO	35A Button_TVS Diode	24V	32V	35A	AR
26809	AR3539	DACO	35A Button_TVS Diode	37V	41V	35A	AR
26813	AR5022	DACO	50A Button_TVS Diode	20V	24V	50A	AR
26814	AR5025	DACO	50A Button_TVS Diode	24V	32V	50A	AR
26815	AR5039	DACO	50A Button_TVS Diode	37V	41V	50A	AR
26810	ARS3522	DACO	35A Button_TVS Diode	20V	24V	35A	ARS
26811	ARS3525	DACO	35A Button_TVS Diode	24V	32V	35A	ARS
26812	ARS3539	DACO	35A Button_TVS Diode	37V	41V	35A	ARS
26816	ARS5022	DACO	50A Button_TVS Diode	20V	24V	50A	ARS
26817	ARS5025	DACO	50A Button_TVS Diode	24V	32V	50A	ARS
26818	ARS5039	DACO	50A Button_TVS Diode	37V	41V	50A	ARS

CONCORD_P6KE_TVS

Detailed product specifications are available on: us.100y.com.tw



Part No.	Product No.	Manufacturer	Description	Power (W)	Stand-off Vrwm	Vbr min	Vbr max	Bidirectional/unidirectional	Package
26291	P6KE100A	CONCORD	CCD_TVS	600W	85.5V	95V	105V	UNI-POLAR	DO-15
26503	P6KE10CA	CONCORD	CCD_TVS	600W	85.5V	95V	105V	BI-POLAR	DO-15
26293	P6KE120A	CONCORD	CCD_TVS	600W	102V	114V	126V	UNI-POLAR	DO-15
26505	P6KE12CA	CONCORD	CCD_TVS	600W	10.2V	11.4V	12.6V	BI-DIRECTIONAL	DO-15
20245	P6KE13CA	CONCORD	CCD_TVS	600W	11.1	12.4	13.7	BI-DIRECTIONAL	DO-15
26295	P6KE150A	CONCORD	CCD_TVS	600W	128V	143V	158V	UNI-POLAR	DO-15
22136	P6KE15CA	CONCORD	CCD_TVS	600W	12.8V	14.3V	15.8V	BI-DIRECTIONAL	DO-15
26296	P6KE160A	CONCORD	CCD_TVS	600W	136V	152V	168V	UNI-POLAR	DO-15
22137	P6KE16CA	CONCORD	CCD_TVS	600W	13.6V	15.2V	16.8V	BI-DIRECTIONAL	DO-15
26533	P6KE170CA	CONCORD	CCD_TVS	600W	145V	162V	179V	BI-DIRECTIONAL	DO-15
22135	P6KE180CA	CONCORD	CCD_TVS	600W	154V	171V	189V	BI-DIRECTIONAL	DO-15
22138	P6KE18CA	CONCORD	CCD_TVS	600W	15.3V	17.1V	18.9V	BI-DIRECTIONAL	DO-15
22145	P6KE200CA	CONCORD	CCD_TVS	600W	171V	190V	210V	BI-DIRECTIONAL	DO-15
26234	P6KE20A	CONCORD	CCD_TVS	600W	17.1V	19V	21V	UNI-POLAR	DO-15
45168	P6KE220A	CONCORD	CCD_TVS	600W	185V	209V	231V	UNI-POLAR	DO-15
45142	P6KE220CA	CONCORD	CCD_TVS	600W	185V	209V	231V	BI-DIRECTIONAL	DO-15
26239	P6KE24A	CONCORD	CCD_TVS	600W	20.5V	22.8V	25.2V	UNI-POLAR	DO-15
26301	P6KE250A	CONCORD	CCD_TVS	600W	214V	237V	263V	UNI-POLAR	DO-15
22134	P6KE27CA	CONCORD	CCD_TVS	600W	23.1	25.7	28.4	BI-DIRECTIONAL	DO-15
45169	P6KE300A	CONCORD	CCD_TVS	600W	256V	285V	315V	UNI-POLAR	DO-15
45154	P6KE300CA	CONCORD	CCD_TVS	600W	256V	285V	315V	BI-DIRECTIONAL	DO-15
26514	P6KE30CA	CONCORD	CCD_TVS	600W	25.6V	28.5V	31.5V	BI-DIRECTIONAL	DO-15
22141	P6KE33CA	CONCORD	TVS	600W	28.2V	31.4V	34.7V	BI-DIRECTIONAL	DO-15
26243	P6KE36A	CONCORD	CCD_TVS	600W	30.8V	34.2V	37.8V	UNI-POLAR	DO-15
22142	P6KE39CA	CONCORD	CCD_TVS	600W	33.3V	37.1V	41V	BI-DIRECTIONAL	DO-15
26304	P6KE400A	CONCORD	CCD_TVS	600W	342V	380V	420V	UNI-POLAR	DO-15
22143	P6KE43CA	CONCORD	CCD_TVS	600W	36.8V	40.9V	45.2V	BI-DIRECTIONAL	DO-15
26305	P6KE440A	CONCORD	CCD_TVS	600W	376V	418V	462V	UNI-POLAR	DO-15

