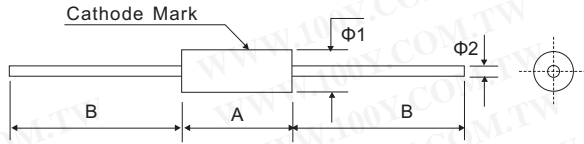


# Semiconductors-Discretes

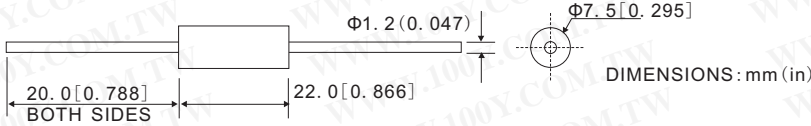
## Resin Molded High Voltage Diodes

Detailed product specifications are available on: [us.100y.com.tw](http://us.100y.com.tw)

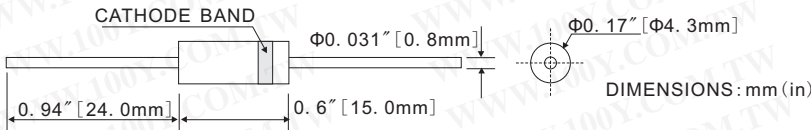


TYPE	A	B	Φ1	Φ2
2CL101	6.5	27	2.5	0.5
2CL102				

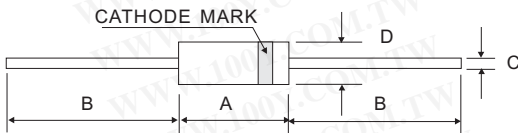
Part No.	Product No.	Description	V <sub>rrm</sub> (V)	I <sub>o</sub> (A)	V <sub>fm</sub>	I <sub>fsm</sub> (A)	T <sub>rr</sub> (nS)
25665	2CL101	High Voltage Diode	6KV	5mA	22V	0.5A	80nS
25666	2CL102	High Voltage Diode	8KV	5mA	28V	0.5A	80nS



Part No.	Product No.	Description	V <sub>rrm</sub> (V)	I <sub>o</sub> (A)	V <sub>fm</sub>	I <sub>fsm</sub> (A)
25667	2CL103	High Voltage Diode	9KV	350mA	10V	30A
25668	2CL104	High Voltage Diode	12KV	350mA	12V	30A
25669	2CL105	High Voltage Diode	9KV	450mA	10V	30A
25670	2CL106	High Voltage Diode	12KV	450mA	12V	30A



Part No.	Product No.	Description	Size A*B*C*D(mm)	V <sub>rrm</sub> (V)	I <sub>o</sub> (A)	V <sub>fm</sub>	I <sub>fsm</sub> (A)	T <sub>rr</sub> (nS)
15437	2CL2FF	Medium Power High Voltage Diode	15*24*0.8*4.3	8KV	100mA	16V	10A	100ns
15439	2CL2FH	Medium Power High Voltage Diode	15*24*0.8*4.3	12KV	100mA	24V	10A	100ns
15438	2CL2FK	Medium Power High Voltage Diode	15*24*0.8*4.3	10KV	100mA	20V	10A	100ns
15440	2CL2FL	Medium Power High Voltage Diode	15*24*0.8*4.3	15KV	100mA	26V	10A	100ns
15441	2CL2FM	Medium Power High Voltage Diode	15*24*0.8*4.3	20KV	100mA	35V	10A	100ns



Style	A	B	C	D
2CL70-71	8.0	24.0	0.6	3.0
2CL72-74	10.0			
2CL75-77	12.0			
2CL70-71A, B	6.5		0.5	2.5

Part No.	Product No.	Description	Size A*B*C*D(mm)	V <sub>rrm</sub> (V)	I <sub>o</sub> (A)	V <sub>fm</sub>	I <sub>fsm</sub> (A)	T <sub>rr</sub> (nS)
15350	2CL70	Resin Molded High Voltage Diode	8*24*0.6*3	6KV	10mA	23V	1A	100nS
15357	2CL70A	Resin Molded High Voltage Diode	6.5*24*0.5*2.5	6KV	10mA	20V	1A	80nS
15359	2CL70B	Resin Molded High Voltage Diode	6.5*24*0.5*2.5	6KV	10mA	22.4V	1A	50nS
15351	2CL71	Resin Molded High Voltage Diode	8*24*0.6*3	8KV	10mA	25V	1A	100nS
15358	2CL71A	Resin Molded High Voltage Diode	6.5*24*0.5*2.5	8KV	10mA	25V	1A	80nS
15360	2CL71B	Resin Molded High Voltage Diode	6.5*24*0.5*2.5	8KV	10mA	28V	1A	50nS
15352	2CL72	Resin Molded High Voltage Diode	10*24*0.6*3	10KV	10mA	30V	1A	100nS
15353	2CL73	Resin Molded High Voltage Diode	10*24*0.6*3	12KV	10mA	37V	1A	100nS
15354	2CL74	Resin Molded High Voltage Diode	12*24*0.6*3	14KV	10mA	42V	1A	100nS
15355	2CL75	Resin Molded High Voltage Diode	12*24*0.6*3	16KV	10mA	50V	1A	100nS
15356	2CL77	Resin Molded High Voltage Diode	12*24*0.6*3	20KV	10mA	62V	1A	100nS
32379	BAR61	Infineon						



Part No.	Product No.	Description	Size A*B*C*D(mm)	V <sub>rrm</sub> (V)	I <sub>o</sub> (A)	V <sub>fm</sub>	I <sub>fsm</sub> (A)	T <sub>rr</sub> (nS)
15442	CL01-09	Medium Power High Voltage Diode	22*20*1.2*7.5	9KV	350mA	10V	30A	
15443	CL01-12	Medium Power High Voltage Diode	22*20*1.2*7.5	12KV	350mA	12V	30A	
15444	CL01-15	Medium Power High Voltage Diode	22*20*1.2*7.5	15KV	350mA	15V	30A	
15445	CL03-15	Medium Power High Voltage Diode	22*20*1.2*7.5	15KV	450mA	23V	40A	100nS
15446	CL04-12	Medium Power High Voltage Diode	22*20*1.2*7.5	12KV	500mA	12V	40A	
15447	CL04-15	Medium Power High Voltage Diode	22*20*1.2*7.5	15KV	500mA	15V	40A	

