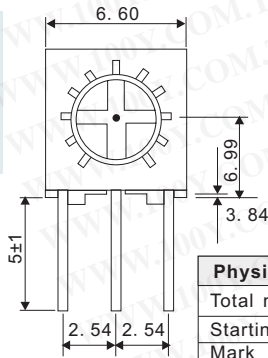
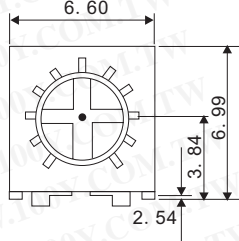


# Resistors & Potentiometers

## BEST\_3266 Square/Multiturn/Cermet Trimmer

Detailed product specifications are available on: [us.100y.com.tw](http://us.100y.com.tw)



Electrical Characteristics	
Range of nominal resistance	50Ω-2MΩ
Resistance tolerance	±10%
Terminal resistance	≤1%R or 10Ω
Contact resistance variation CRV	≤3%R or 5Ω
Insulation resistance R1	≥1GΩ(500V)
Withstand voltage	700vac

Physical Characteristics	
Total mechanical travel	250±10° (250±10°nom)
Starting torque	≤30mN.m
Mark	Resistance tolerance (when no identification. It is of ±10%) resistance code type
Standard packaging	50pcs per tube

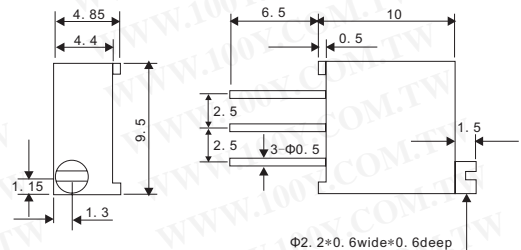
Part No.	Product No.	Description	Resistance data (Ω)	Type	Tolerance (±)	Power Rating (W)
15407	3266W-100KΩ	6*6 Square/Multiturn/Cermet Trimmer(ROHS)	100K ohm	3266W	+/-10%	0.25W
15401	3266W-100Ω	6*6 Square/Multiturn/Cermet Trimmer(ROHS)	100 ohm	3266W	+/-10%	0.25W
15406	3266W-10KΩ	6*6 Square/Multiturn/Cermet Trimmer(ROHS)r	10K ohm	3266W	+/-10%	0.25W
15404	3266W-1KΩ	6*6 Square/Multiturn/Cermet Trimmer(ROHS)	1K ohm	3266W	+/-10%	0.25W
15402	3266W-200Ω	6*6 Square/Multiturn/Cermet Trimmer(ROHS)	200 ohm	3266W	+/-10%	0.25W
15405	3266W-2KΩ	6*6 Square/Multiturn/Cermet Trimmer(ROHS)	2K ohm	3266W	+/-10%	0.25W
15403	3266W-500Ω	6*6 Square/Multiturn/Cermet Trimmer(ROHS)	500 ohm	3266W	+/-10%	0.25W
31100	3266W-50Ω	6*6 Square/Multiturn/Cermet Trimmer(ROHS)	50 ohm	3266W	+/-10%	0.25W

## TRIMMER\_WIW3296 Multiturn Square Cermet Sealed Industrial

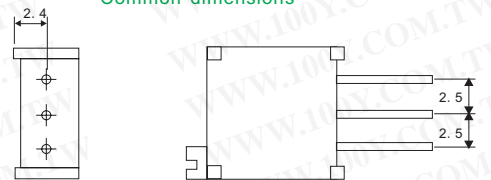
Detailed product specifications are available on: [us.100y.com.tw](http://us.100y.com.tw)



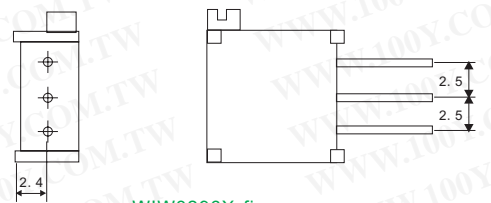
- Features**
- Multiturn / Cermet / Industrial / Sealed
  - 5 terminal styles (W, X, P, Y, Z)
  - Available with a knob for finger adjust



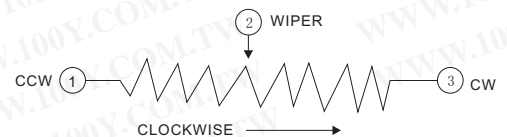
Common dimensions



WIW3296W fig.



WIW3296X fig.



Electrical Characteristics	
Standard Resistance Range	10 to 5 megohms (see standard resistance table)
Resistance Tolerance	±10% std.(tighter tolerance available)
Absolute Minimum Resistance	1% or 2 ohms max. (whichever is greater)
Contact Resistance Variation	3% or 3 ohms max.(whichever is greater)
Adjustability	Voltage ±0.01% Resistance ±0.05%
Resolution	Infinite
Insulation Resistance	500 vdc 1,000 megohms min.
Dielectric Strength	101.3 kPa 600 vac 8.5 kPa 360 vac
Effective Travel	25 turns nom.

Environmental Characteristics	
Power Rating (300 volts max.)	0.5 watt (70°C) , 0 watt (125°C)
Temperature Range	-55°C to +125°C
Temperature Coefficient	±100ppm/°C
Vibration	98 m/s <sup>2</sup> (1%ΔTR;1%ΔVR)
Shock	490 m/s <sup>2</sup> (1%ΔTR; 1%ΔVR)
Load Life	1,000 hours 0.5 watt @ 70°C (3%ΔTR; 3% or 3 ohm, whichever is greater, CRV)
Rotational Life	200 cycles (3%ΔTR; 3% or 3 ohm, whichever is greater, CRV)

Physical Characteristics	
Torque	36 mN.m max.
Mechanical Stops	Wiper idles
Terminals	Solderable pins
Standard Packaging	50 pcs. per tube

Part No.	Product No.	Description	Resistance data (Ω)	Type	Tolerance (±)	Power Rating (W)
15424	WIW3296W-100KΩ	TRIMMER_WIW3296 Multiturn Square Trimming Potentiometer	100K ohm	WIW3296W	+/-10%	0.5W
15418	WIW3296W-100Ω	TRIMMER_WIW3296 Multiturn Square Trimming Potentiometer	100 ohm	WIW3296W	+/-10%	0.5W
15423	WIW3296W-10KΩ	TRIMMER_WIW3296 Multiturn Square Trimming Potentiometer	10K ohm	WIW3296W	+/-10%	0.5W



T E L : Taiwan : 886-3-5753170  
 F A X : Taiwan : 886-3-5753172  
 E-mail : Taiwan : [us\\_sale@100y.com.tw](mailto:us_sale@100y.com.tw)

Shenzhen : 86-755-83298787  
 Shenzhen : 86-755-83640655  
 Shenzhen : 100y@163.com

Shanghai : 86-21-54151736  
 Shanghai : 86-21-64605107  
 Shanghai : 100y-1@163.com