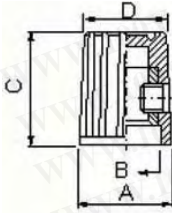


Resistors & Potentiometers

Pointer Knob

Detailed product specifications are available on: us.100y.com.tw

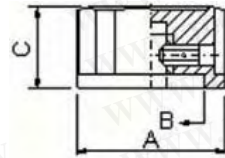


A	B	C	D	SHAFT HOLE
Φ13.0	Φ10.0	15.5	Φ11.8	Φ6.4 Φ6.1

FEATURES

- Material: phenolic
- With white dot
- Set screw on one side
- With brass insert

Part No.	Product No.	Description	Shaft Hole	Down Di*High*Up Dia.
14328	PN-37-6.4	Pointer Knob	6.4 & 6.1mm	13.0*15.5*11.8mm

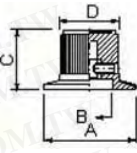
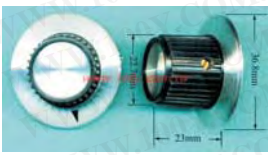


	A	B	C	SHAFT HOLE
D	Φ23.4	Φ20.1	15.8	Φ6.4
F	Φ15.0	Φ11.8	11.8	Φ6.4

FEATURES

- Material: ABS
- With white indicator line
- Set screw on one side
- With brass insert
- With color inlay

Part No.	Product No.	Description	Shaft Hole	Down Di*High*Up Dia.
14352	RN-100D-6.4	Pointer Knob	6.4mm	23.4*15.8mm
14327	RN-100F-6.4	Pointer Knob	6.4mm	15.0*11.8mm

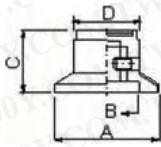


	A	B	C	D	SHAFT HOLE
RN-112A	Φ36.8	Φ18.5	23.7	Φ22.7	Φ6.4
RN-112B	Φ36.8	Φ18.5	23.0	Φ22.7	Φ6.4

FEATURES

- Material: phenolic
- Skirt plate with number 0~10
- Set screw on one side
- With brass insert
- With aluminum spun inlay

Part No.	Product No.	Description	Shaft Hole	Down Di*High*Up Dia.
44966	RN-112A	Pointer Knob	6.4mm	36.8*23.0*22.7mm
14331	RN-112B-6.4	Pointer Knob	6.4mm	36.8*23.0*22.7mm

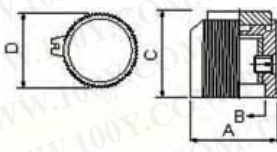


A	B	C	D	SHAFT HOLE
Φ23.6	Φ15.0	14.2	Φ15.2	Φ6.4

FEATURES

- Material: phenolic
- Skirt plate with delta mark
- Set screw on one side
- With brass insert
- With aluminum spun inlay

Part No.	Product No.	Description	Shaft Hole	Down Di*High*Up Dia.
14330	RN-117B-6.4	Pointer Knob	6.4mm	23.6*14.2*15.2mm

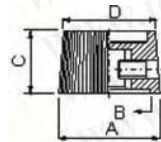
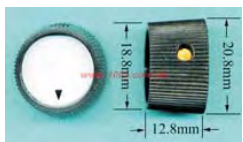


	A	B	C	D	SHAFT HOLE
E	Φ23.0	Φ13.2	16.2	Φ19.5	Φ6.4 Φ3.2
F	Φ15.0	Φ8.9	15.1	Φ13.2	Φ6.4 Φ6.1 Φ3.2

FEATURES

- Material: phenolic
- With white indicator line
- Set screw on one side
- With brass insert

Part No.	Product No.	Description	Shaft Hole	Down Di*High*Up Dia.
14508	RN-118E-BL-6.4	Pointer Knob	6.4mm	23*16.2*19.5mm
14507	RN-118E-R-6.4	Pointer Knob	6.4mm	23*16.2*19.5mm
14351	RN-118F-BL-6.4	Pointer Knob	6.4mm	15*15.1*13.2mm
14350	RN-118F-R-6.4	Pointer Knob	6.4mm	15*15.1*13.2mm



A	B	C	D	SHAFT HOLE
Φ20.8	Φ16.8	12.8	Φ18.8	Φ6.4

FEATURES

- Material: phenolic
- With aluminum spun inlay
- Set screw on one side
- With brass insert
- With delta mark

Part No.	Product No.	Description	Shaft Hole	Down Di*High*Up Dia.
14329	RN-92B-6.4	Pointer Knob	6.4mm	20.8*12.8*18.8mm

Gold Knobs

Detailed product specifications are available on: us.100y.com.tw



Weight: 0.15kg

Part No.	Product No.	Description	Down Dia*High*Up Dia.
23839	Gold Knob	Gold Knob	34*22*34mm

