

Resistors & Potentiometers

2W Multi Precision Potentiometers (Wirewound)

Detailed product specifications are available on: us.100y.com.tw



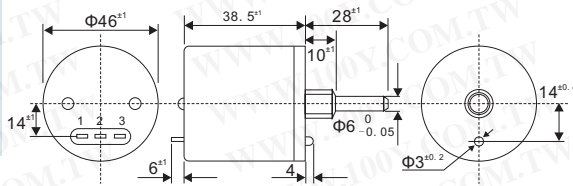
Mechanical Characteristics¹

Marking	Manufacturer's name and part number, resistance value and tolerance, linearity tolerance, wiring diagram, and date code.
Ganging (Multiple Section Potentiometers)	1 cup maximum
Hardware	One lockwasher and one mounting nut is shipped with each potentiometer.

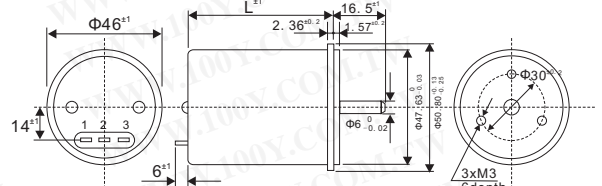
Part No.	Product No.	Manufacturer	Description	Shaft Dia. (mm)	Resistance data (Ω)	Power rating (W)	Num.of Wire	Tolerance (±)
36884	3590S-2-102L	Bourns	Precision Potentiometer	6.3	1K	2W	10	±5%
17536	3590S-2-103L	Bourns	2W Multi Precision Potentiometer	6.3	10K ohm	2W	10	+5%
36887	3590S-2-104L	Bourns	Precision Potentiometer	6.3	100K	2W	10	±5%
36885	3590S-2-202	Bourns	Precision Potentiometer	6.3	2K	2W	10	±5%
23722	3590S-2-203	Bourns	2W Precision Potentiometer	6.3	20KΩ	2W	10	±5%
35807	3590S-2-502	Bourns	Precision Potentiometer	6.3	5K	2W	10	±5%
36886	3590S-2-503	Bourns	Precision Potentiometer	6.3	50K	2W	10	±5%



Bushingmount type



Servomount type

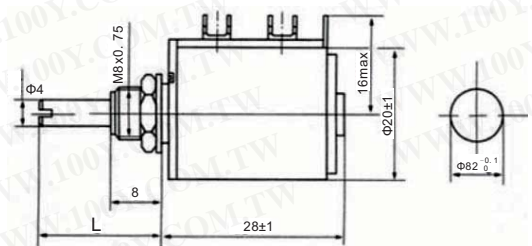


General Specifications																
Standard Resistance Range:	0.5Ω to 20kΩ (3-turn) 0.5Ω to 50kΩ (5-turn) 0.5Ω to 100kΩ (10, 15-turn) 0.5Ω to 200kΩ (20-turn)															
Max. Practical Resistance Value:	50kΩ, 100kΩ (3-turn) 100kΩ (5-turn) 200kΩ (10, 15-turn) 500kΩ (20-turn)															
Total Resistance Tolerance:	Standard Class ±3% (H) [±5% (J) in case of below 1kΩ Precision Class ±1% (F)] [in the pot. with a single-wire resistive element, the precision class should read ±2% (G)]															
Independent Linearity Tolerance:	<table border="0"> <tr> <td></td> <td>3</td> <td>10, 15</td> </tr> <tr> <td></td> <td>5-turn</td> <td>20-turn</td> </tr> <tr> <td>Standard class</td> <td>±0.4%</td> <td>±0.3%</td> </tr> <tr> <td>Precision class</td> <td>±0.2%</td> <td>±0.1%</td> </tr> <tr> <td>(Below 5kΩ)</td> <td>(±0.25%)</td> <td>(±0.15%)</td> </tr> </table>		3	10, 15		5-turn	20-turn	Standard class	±0.4%	±0.3%	Precision class	±0.2%	±0.1%	(Below 5kΩ)	(±0.25%)	(±0.15%)
	3	10, 15														
	5-turn	20-turn														
Standard class	±0.4%	±0.3%														
Precision class	±0.2%	±0.1%														
(Below 5kΩ)	(±0.25%)	(±0.15%)														
Power Rating:	2.0W (3-turn) 2.5W (5-turn) 5.0W (10-turn) 7.5W (15-turn) 10.0W (20-turn)															
Noise:	Below 100Ω E.N.R															
Electrical Travel:	360° × n ±5° (n: No. of turns)															
Mechanical Travel:	360° × n ^{+10°} / _{0°} (n: No. of turns)															
Insulation Resistance:	Over 100MΩ at 1,000V.D.C.															
Dielectric Strength:	1 minute at 1,000V.A.C.															
Starting Torque:	Below 20mN·m (200gf·cm) (Bushingmount type) Below 10mN·m (100gf·cm) (Servomount type)															
Stopper Strength:	Approx. 0.9N·m (9kgf·cm)															
Max. Working Voltage	900V															
Resist. Temperature Coefficient of Wire	±20p.p.m./°C															
Mass:	Approx. 90g (3,5-turn) Approx. 120g (10-turn) Approx. 150g (15-turn) Approx. 180g (20-turn)															

Part No.	Product No.	Manufacturer	Description	Shaft Dia. (mm)	Resistance data (Ω)	Power rating (W)	Num.of Wire	Tolerance (±)
28600	46HD-3-10K	Sakae	Precision Potentiometers (Wirewound)	6	10K ohm	2W	20 Circles	±0.4%
28602	46HD-3-20K	Sakae	Precision Potentiometers (Wirewound)	6	20K ohm	2W	20 Circles	±0.4%
48276	46HD-3-2K	Sakae	Precision Potentiometers (Wirewound)	6	2KΩ	2W	20 Circles	±0.4%



- Power consume: (70°C) 2W
- Resistance range: 100Ω~47KΩ
- Mechanical travel: 180°±10°
- Max. working voltage: 160V
- Mechanical life: 10000 cycle



Part No.	Product No.	Description	Resistance data (Ω)	Power rating (W)	Num.of Wire
39836	WXD3-12-22KΩ	2W Multi Precision Potentiometer 22KΩ	22KΩ	2W	10 Circles



T E L : Taiwan: 886-3-5753170
F A X : Taiwan: 886-3-5753172
E-mail : Taiwan: us_sale@100y.com.tw

Shenzhen: 86-755-83298787
Shenzhen: 86-755-83640655
Shenzhen: 100y@163.com

Shanghai: 86-21-54151736
Shanghai: 86-21-64605107
Shanghai: 100y-1@163.com