



Relays & Solenoids

Plug-In Interface DC To AC Solid State Relays

Detailed product specifications are available on: us.100y.com.tw

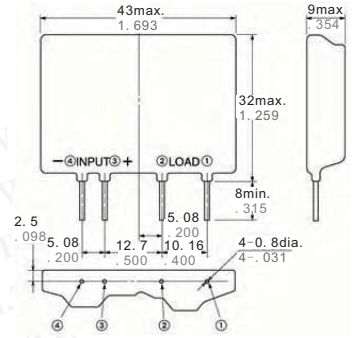
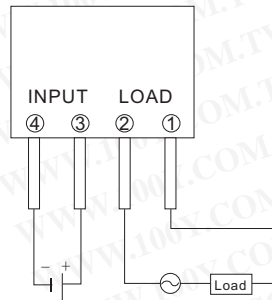


TYPICAL APPLICATIONS

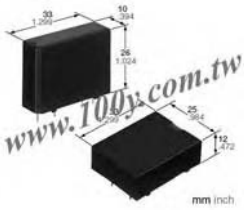
Most suitable as drivers for small size AC motors, solenoids, solenoid valves and so on.

1. Copying equipment
2. Air conditioners
3. Industrial equipment such as NC machines, sequencers, robots and so on

Schematic



Part No.	Product No.	Manufacturer	Description	Irms	Vrms
47559	AQ3A1-C1-ZT5VDC	NAIS	NAIS_SOLID STATE RELAY	3A	75 to 125 V AC



FEATURES

1. 10A high-capacity realized for PC board terminal (with heat sink)

SSR for compact PC boards with 10 A capacity that is two times greater than our previous model. It is suitable for long-life, highly frequent control.

2. VDE (EN60950-1) reinforced insulation compliant

Fully satisfies demand for safety by guaranteeing compliance with EN60950-1 safety standard and featuring 3,000 V reinforced insulation (AQ3A2-ZT4/32VDC, AQ3A2-J-ZT4/32VDC and AQ10A2-ZT4/32VDC).

3. Superior anti-vibration and anti-shock characteristics

The body is molded as a single unit with flame resistant resin which makes it highly resistant against vibration and shock, and gives it superior protection from environment. The body can also be washed.

4. Vertical types with SIL terminal arrangement and flat types are available.

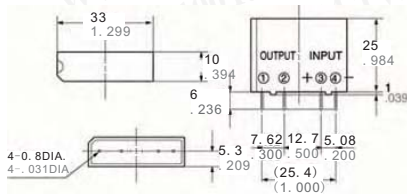
1) The vertical type is available in thicknesses of 10 mm (2 A and 3 A types) and 12 mm (5 A and 10 A types). Terminal arrangement is SIL in integral multiples of 2.54 mm (0.1 inch).

2) The height of the flat type is 12 mm. The terminal arrangement is DIL in integral multiples of 2.54 mm.

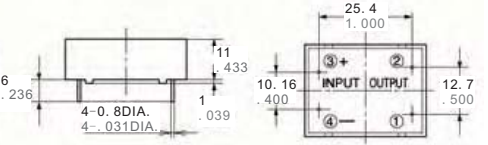
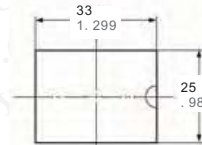
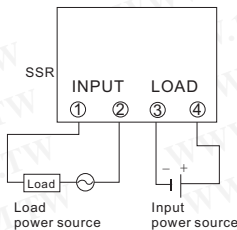
5. Reduced noise generation

The load will operate at close to zero voltage even when the input signal is applied during a cycle. Also, even if an input signal is cancelled during a cycle, the load is cut off at close to zero current. For this reason, hardly any noise is produced and radio frequency interference (RFI) and electromagnetic interference (EMI) are kept to a minimum.

6. Built-in Snubber circuit prevents malfunction.



Schematic

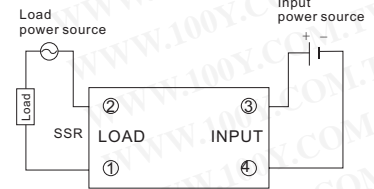


1. AC output, 2A and 3A types (Vertical)

2. Characteristics (at 20°C 68°F, Ripple factor: less than 1%)

Type		3A type	DC output	Remarks
Operate time, Max.		(1/2 cycle of voltage sine wave) + 1 ms	0.5 ms	
Release time, Max.		1/2 cycle of voltage sine wave) + 1 ms	2 ms	
Insulation resistance, Min		100 M Ω for input, output and case	100 M Ω for input, output	at 500 V DC
Breakdown voltage		4,000 Vrms between input and output 2,500 Vrms among input, output and case	3,000 Vrms between input-output	For 1 minute
Vibration resistance	Destructive	117.6 m/s ² {12G}, 10 to 55 Hz at double amplitude of 2 mm	117.6 m/s ² {12G}, 10 to 55 Hz at double amplitude of 2 mm	1 hour for X, Y, Z axis
	Functional	117.6 m/s ² {12G}, 10 to 55 Hz at double amplitude of 2 mm	117.6 m/s ² {12G}, 10 to 55 Hz at double amplitude of 2 mm	10 minutes for X, Y, Z axis
Shock resistance	Destructive	Min. 980 m/s ² {100 G}	Min. 980 m/s ² {100 G}	5 times each for X, Y, Z axis
	Functional	Min. 980 m/s ² {100 G}	Min. 980 m/s ² {100 G}	4 times each for X, Y, Z axis
Ambient temperature		-30°C to +80°C -22°F to +176°F		
Storage temperature		-30°C to +100°C -22°F to +212°F		
Operational method		Zero-cross (Turn-ON and Turn-OFF)		

2. AC output, 2A and 3A types (Flat)



TYPICAL APPLICATIONS

- Printing machines
- Packing machines
- Traffic signal control
- Automatic ticket punchers
- Terminal equipment of data processing
- Computer peripherals
- NC machines

Part No.	Product No.	Manufacturer	Description	Vin	Irms	Vrms
47556	AQ3A2-ZT4/32VDC	NAIS	NAIS_AQ1 RELAYS RELAY	4 to 32 V DC	3A	75 to 250 V AC

FEATURES

•Two types available: Random type and Zero-cross type Random type permits phase control and Zero-cross type suppresses occurrence of noise.

•Vertical typeThe small-sized vertical type (43 mm long × 9 mm wide × 24 mm high) (1.693×.354×.945 inch) permits high density mounting to PC board.

•High dielectric strength: 1,500 V AC (between input and output)
4,000 V AC (between input and output)

TYPICAL APPLICATIONS

- Copying equipment
- NC machines, sequencers, robots
- Air conditioners

