



Relays & Solenoids

Surface Mounting Power DC To AC Solid State Relays

Detailed product specifications are available on: us.100y.com.tw



- 12-280VAC -50A Zero-Cross AC Output
- Large control range : 3-32Vdc / ic < 10 mA on all the range
- Green LED visualization on the input
- IP20 Protection optional (1K460000)
- Designed for resistive loads

Part No.	Product No.	Manufacturer	Description	Vin drive voltage	Irms Load current	Vrms Load voltage
44904	SVT869994	Celduc	Surface Mounting Power DC-AC SSR	3-32Vdc	50A	280VAC



- **Zero Voltage and Random Turn-On Switching**
- **Triac Output**
- **Industry Standard Package**
- **Panel Mount**

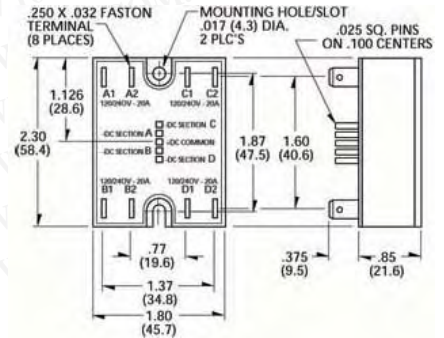
Four independent AC output relays come in a single standard panel-mount package. Utilizing an AC switch output with internal snubber, relays provide greater protection against false triggering. Model choices include zero-voltage or random turn-on (phase controllable) switching. Manufactured in Crydom's ISO 9001 Certified facility for optimum product performance and reliability.

GENERAL SPECIFICATIONS

Dielectric Strength 50/60Hz Input/Output/Base	2500 Vrms
Insulation Resistance (Min.) @ 500 Vdc	10 ⁹ Ohm
Max. Capacitance Input/Output	10 pF
Ambient Operating Temperature Range	-40 to 80°C
Ambient Storage Temperature Range	-40 to 125°C

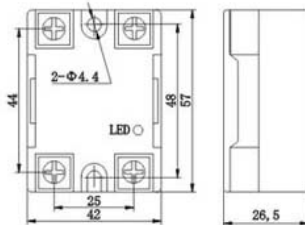
MECHANICAL SPECIFICATIONS

Weight: (typical)	3.5 oz. (109g)
Encapsulation:	Thermally Conductive Epoxy
Terminals:	.250 Faston, .025 Square Pins



All dimensions are in inches (millimeters)

Part No.	Product No.	Manufacturer	Description	Vin drive voltage	Irms Load current	Vrms Load voltage	Switching Type
36185	TD2420Q	Crydom	DC-AC Solid-state Relay	4-15 Volts DC	20 Amps RMS	280 Volts RMS	AC

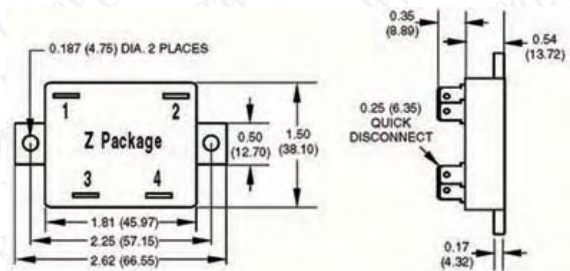


Load accent presses the scope	0-240VAC 0-480VAC
load maximum current	10A 20A 25A 30A 40A
Outside meets adjusts the potentiometer	470-560KΩ
Leads passes the angle scope	0-170°
Passing condition pressure drop	≤2VAC
Output leakage current	≤1VAC
medium pressure resistance	≥2500VAC
dielectric resistance	≥100mΩ
switching time	≤1mS
frequency range	50-60Hz
load current safety coefficient	anti load 50-60% perceptual load 30-40%

Part No.	Product No.	Manufacturer	Description	Vin drive voltage	Irms Load current	Vrms Load voltage	Switching Type
38209	XSSR-D4825	XURUI	Solid-state Relay	3~32VDC	25A	75~480VAC	XSSR
29928	XSSR-D4840	XURUI	XURUI_Surface Mounting Power DC To AC Solid State Relays	3~32VDC	40A	75~480VAC	XSSR



The Z Series employs a unique heat transfer system that makes it possible for Opto 22 to deliver a low-cost, 10-amp, solid state relay in an all-plastic case. The push-on tool-free quick-connect terminals make the Z Series ideal for high-volume OEM applications.



Part No.	Product No.	Manufacturer	Description	Irms Load current	Vrms Load voltage
31079	Z120D10	OPTO22	Surface Mounting Power DC-AC SSR Solid-state Relay	10A	120V
31080	Z240D10	OPTO22	Surface Mounting Power DC-AC SSR Solid-state Relay	10A	240V

