



Relays & Solenoids

Surface Mounting Power DC To AC Solid State Relays

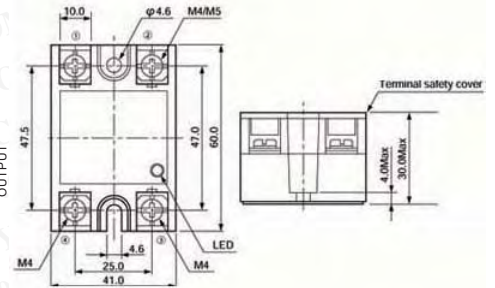
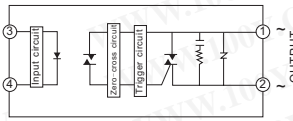
Detailed product specifications are available on: us.100y.com.tw



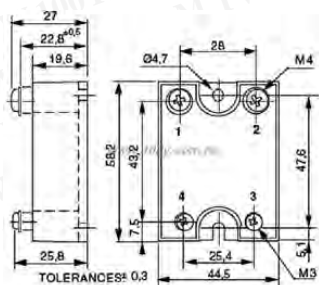
Features

- 15A/25A/45A type have common dimensions
- LED installed
- Dielectric strength between input and output at 3,000V/1 min.
- Built-in varistor (surge absorb element)
- UL, C-UL, VDE standard approved
- Terminal safety cover installed
- Optional heat-sink available

Torque range
M4 terminal 1.5 N·m (MAX)
M5 terminal 2.0N·m (MAX)
Outer use 1.5N·m (MAX)



Part No.	Product No.	Manufacturer	Description	Vin drive voltage	Irms Load current	Vrms Load voltage	Switching Type
37220	S3C-225WDV	JEL	JEL_DC to AC SSR	DC3-30V	25A	AC35-264V	Zero-cross-circuit



SC742110

- 12-280VAC -25A Random AC Output.
- IP20 Protection optional (1K460000).
- Designed for motor control & phase angle control.

SC744110

- 12-280VAC -40A Random AC Output.
- IP20 Protection optional (1K460000).
- Designed for motor control & phase angle control.

SC844110

- 12-280VAC -40A Zero-Cross AC Output.
- IP20 Protection optional (1K460000).
- Designed for all types of loads.

SC954160

- 12-440VAC -40A Zero-Cross AC Output.
- IP20 Protection optional (1K460000).
- Designed for resistive loads.



SC965160

- 24-600VAC -50A Zero-Cross AC Output.
- IP20 Protection optional (1K460000).
- Designed for resistor loads.
- Visualization by Led.



Part No.	Product No.	Manufacturer	Description	Vin drive voltage	Irms Load current	Vrms Load voltage	Switching Type
17713	SC742110	Celduc	Surface Mounting Power DC-AC SSR	3~30Vdc	25A	280Vac	
17714	SC744110	Celduc	Surface Mounting Power DC-AC SSR	3~30Vdc	40A	280Vac	
17715	SC844110	Celduc	Surface Mounting Power DC-AC SSR	4~30Vdc	40A	280Vac	Zero-cross relay
17717	SC954160	Celduc	Surface Mounting Power DC-AC SSR	5~30Vdc	40A	600Vac	Zero-cross relay
34215	SC965160	Celduc	Surface Mounting Power DC-AC SSR	5~30Vdc	50A	600Vac	

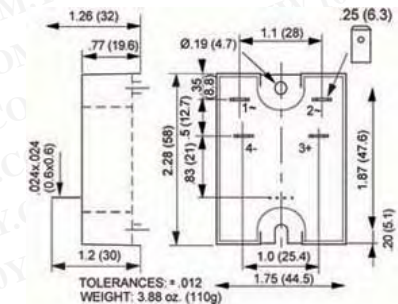
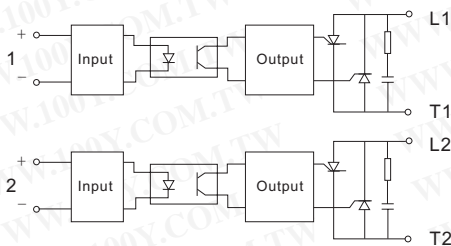


FEATURES/BENEFITS

- Designed for all types of loads
- Dual output (two relays in one package)
- Faston terminals • Connector for common or individual control
- Tight zero-cross window for low EMI
- High immunity to surges

DESCRIPTION

The Series SD dual-phase relays are designed for all types of loads. The design incorporates two relays in a single package. The relays utilize optical isolation to protect the control from load transients. High-current models are excellent for motor and phase angle control. The 50A 600 Vac models are available with common control connector or individual control connector.



APPLICATIONS

- Motor control
- Heating control
- Uninterruptible power supplies
- Light dimmers
- Industrial and process control
- On/Off controls of AC equipment



Part No.	Product No.	Manufacturer	Description	Vin drive voltage	Irms Load current	Vrms Load voltage	Switching Type
44239	SD48D40-06	TELEDYNE	Up to 50A 600Vac Hockey Puck Dual SSR	5~30VDC	40A	24-500VAC	Zero-Cross turn-on



- Compact for High Density PCB Mount
- DC Control
- SCR Output

The Series SDV and SDI solid state relays are rated at 1.5 Amps RMS at ambient temperatures up to 40°C. The compact 16 pin DIP package is perfect for high density printed circuit boards. The SDV is voltage operated, and the SDI is current operated. Both are offered in either zero voltage or random switching (R) versions.

Manufactured in Crydom's ISO 9002 Certified facility for optimum product performance and reliability.

