



Relays & Solenoids

Surface Mounting Power AC To AC Solid State Relays

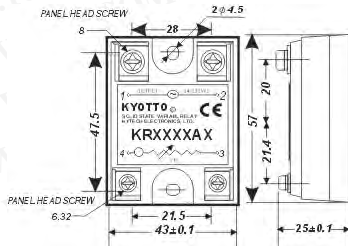
Detailed product specifications are available on: us.100y.com.tw



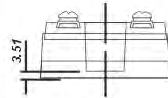
SPECIFICATIONS

Model No.	Control Impedance	Must turn off voltage	Input Impedance	Max load current	Load voltage range	Min blocking voltage	Max off-state leakage	Frequency range
KR2010AX	VRO~500KΩ	MAX10VAC	1.5Kohm	10A	24~280VAC	600VAC	LESS 5 mA	47~70HZ
KR2040AX	VRO~500KΩ	MAX10VAC	1.5Kohm	40A	24~280VAC	600VAC	LESS 5 mA	47~70HZ

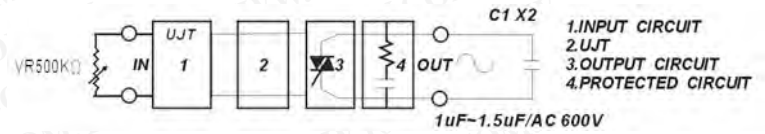
Model NO.	Isolation Impedence	Dielectric strength input-output	Dielectric strength input output-case	Turn-on time	Turn-off time	Capacitance in-out	Weight (g)
KR2010AX	10 ⁹ ohm	4000 VACrms	2500 VACrms	LESS 2 mSec	LESS ½ AC cycle	LESS 15 PF	92g
KR2040AX	10 ⁹ ohm	4000 VACrms	2500 VACrms	LESS 2 mSec	LESS ½ AC cycle	LESS 15 PF	95g



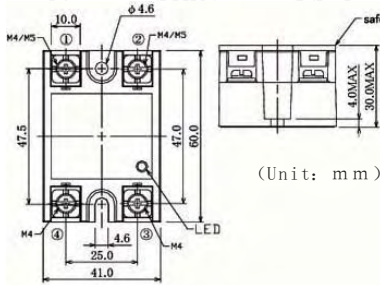
OUTLINE DIMENSIONS (Unit: mm)



EQUIVALENT CIRCUIT



Part No.	Product No.	Manufacturer	Description	Vin drive voltage	Irms Load current	Vrms Load voltage
46351	KR2010AX	KYOTTO	Surface Mounting Power AC-AC SSVR	250K ohm	10A	24~280VAC
24918	KR2040AX	KYOTTO	Kyotto_Surface Mounting Power AC-AC SSVR		40A	24~280VAC



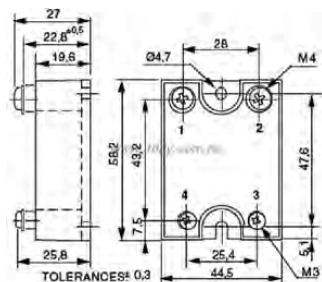
Features

- AC input type is added to S3C series item line
Available for operation both with AC100V / 200V input signal
- Common dimensions with DC input type
Same form and dimensions with DC input type and small-sized panel is attachable
- Safety features
Varistor and CR effectively absorb external surges Terminal safety cover prevents electric shock
- Operation indication lamp
LED display indicates the normal operation
- International safety standard
UL/c-UL/VDE application is scheduled

Characteristics

Item	S3C-225ADV	S3C-245ADV
Input voltage range	AC 85 ~ 264Vrms	
Load voltage range	AC 85 ~ 264Vrms	
Off state leakage current	12mA and below (Vo=200V)	
On state voltage drop	1.5Vrms and below	
Min. load current	100mA	
Zero-cross function	Built-in	
International safety standard	UL, c-UL, VDE application is scheduled	

Part No.	Product No.	Manufacturer	Description	Vin drive voltage	Irms Load current	Vrms Load voltage	Switching Type
37228	S3C-225ADV	JEL	JEL 25A AC SSR	AC85-264V	15A	AC85-264V	Zero-cross-circuit
37225	S3C-245ADV	JEL	JEL AC 45A SSR	AC85-264V	45A	AC85-264V	Zero-cross-circuit



- Synchronous exit AC: 12-280VAC-40A
- Possibility of protection IP20 in option: Cap 1K460000
- Adapted to any type of loads

Part No.	Product No.	Manufacturer	Description	Vin drive voltage	Irms Load current	Vrms Load voltage	Switching Type
17716	SC844910	Celduc	Surface Mounting Power AC-AC SSR	90~240Vac	40A	280Vac	Zero-cross relay

