

Relays & Solenoids

Others_PCB Relays



Features

- Telecom/signal relay (dry circuit, test access, ringing)
- Slim line 10 x 6 mm, 0.39 x 0.24 inch
- Low profile 5.65 mm, 0.222 inch
- Minimum board-space 60 mm²
- Switching current 2 A
- 2 changeover contacts (2 form C / DPDT)
- Bifurcated contacts, gold plated

Typical applications

- Communications equipment Linecard application – analog, ISDN, xDSL, PABX Voice over IP
- Office and business equipment
- Measurement and control equipment
- Consumer electronics, Set top boxes, HiFi
- Medical equipment

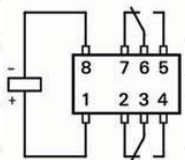
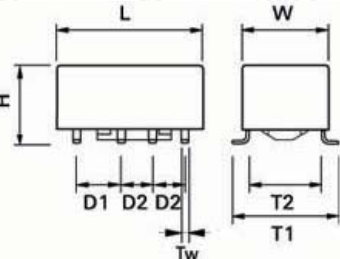
Detailed product specifications are available on: us.100y.com.tw

- High sensitivity results in low nominal power consumption 140 mW for non latching standard 100 mW for latching version and non latching high sensitive version
- Ultra high sensitive type 50 mW for non latching
- High surge capability (1.2/50 μs and 10/700 μs) meets Telcordia GR 1089, FCC Part 68 and ITU-T K20, 21, 45
 - ≥1500 V between open contacts
 - ≥ 2500 V between coil and contacts
- High mechanical shock resistance up to 300 G functional, up to 500 G survival
- Hermetically sealed (RT W)

Contact Data

Number of contacts and type	2 changeover contacts	
Contact assembly	Bifurcated contacts	
Limiting continuous current at max. ambient temperature	2 A	
Maximum switching current	2 A	
Maximum switching voltage	220 Vdc 250 Vac	
Maximum switching capacity	60 W, 62.5 VA	
Thermoelectric potential	< 10 μV	
Minimum switching voltage	100 μV	
Initial contact resistance / measuring condition: 10 mA / 20 mV	< 50 mΩ	
Electrical endurance at contact application 0 (≤ 30 mV / ≥ 10 mA)	min. 2.5 x 10 ⁶ operations	
Resistive load	cable load open end	min. 2.0 x 10 ⁶ operations
	at 125Vdc / 0.24 A - 30 W	min. 5 x 10 ⁵ operations
	at 220 Vdc / 0.27 A - 60 W	min. 1 x 10 ⁵ operations
	at 250 Vac / 0.25 A - 62.5 VA	min. 1 x 10 ⁵ operations
	at 30 Vdc / 1 A - 30 W	min. 5 x 10 ⁵ operations
at 30 Vdc / 2 A - 60 W	min. 1 x 10 ⁵ operations	
Mechanical endurance	typ. 10 ⁸ operations	
UL contact ratings	220 Vdc / 0.24 A - 60 W 125 Vdc / 0.24 A - 30 W 250 Vac / 0.25 A - 62.5 VA 125 Vac / 0.5 A - 62.5 VA 30 Vdc / 2 A - 60 W	

SMT Version Gull Wings



not energized condition Non-latching type

Part No.	Product No.	Description	Type	Contact Arrangement	Contact Rating	Coil Voltage	Recognized Safety	Outline L*W*H
47070	IM02GR	AXICOM_Signal PCB Relay	non-latching, 1 coil	2 Form C	2A 30VDC	4.5VDC	UL, CSA	10*6*5.65

Applications

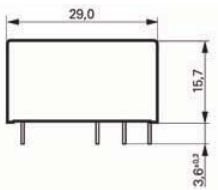
Domestic appliances, heating control, emergency lighting, modems



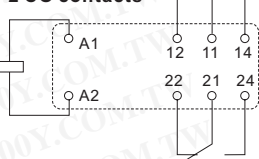
- 2pole 8A, 2CO or 2NO contacts
- DC- or AC-coil
- Sensitive coil 400mW
- Reinforced insulation
- WG version: Product in accordance to IEC60335-1
- RoHS compliant (Directive 2002/95/EC) as per product date code 0413

Contact data

Contact configuration	2 CO or 2 NO
Contact set	single contact
Type of interruption	micro disconnection
Rated current	8 A, UL: 10 A
Rated voltage / max. switching voltage AC	240/400VAC
Limiting continuous current	UL: 10 A
Maximum breaking capacity AC	2000 VA
Limiting making capacity, max 4 s, duty factor 10%	15 A
Contact material	AgNi 90/10, AgNi 90/10 gold plated, AgSnO ₂
Mechanical endurance DC coil	> 30 x 10 ⁶ cycles
AC coil	> 5 x 10 ⁶ cycles
Rated frequency of operation with / without load	6 / 1200 min-1



2 CO contacts



Part No.	Product No.	Description	Type	Contact Arrangement	Contact Rating	Coil Voltage	Recognized Safety	Outline L*W*H
47066	RT424012	SCHRACK_PCB Power Relay	RT2, 2 pole	2 Form C, DPDT	8A 250VAC	12VDC	UL, CSA, VED	29*12.7*15.7

P&B PCB Relays



Part No.	Product No.	Description	Type	Contact Rating	Coil Voltage	Recognized Safety	Outline L*W*H
39880	T91S5D22-24	P&B PCB Relays	T91	N.O. 20A N.C. 10A 240VAC	24VDC	UL, CSA	31.8*26.9*27.9mm

FEATURES

- Standard telecom relay (ringing and test access)
- Slim line 15x7.5mm, 0.590x0.295inch
- Switching current 5A
- 2 changeover contacts (2 form C / DPDT)
- Bifurcated contact
- Immersion cleanable

- High sensitivity results in low nominal power consumption 140mW for non-latching and latching with 2 coils 70mW for latching with 1 coil
- For single coil version:
- Surge voltage resistance between contact and coil for single coil version:
- 2.5kV (2/10μs) meets the telcordia requirement GR-1089
- 1.5kV (10/160μs) meets FCC part 68

Typical applications

- Communications equipment linecard application (ringing and test access) PABX Voice over IP
- Office equipment
- Measurement and control equipment
- Automotive equipment CAN bus, keyless entry, speaker switch

- Medical equipment

- Consumer electronics Set top boxes, HiFi



T E L : Taiwan: 886-3-5753170
F A X : Taiwan: 886-3-5753172
E-mail : Taiwan: us_sale@100y.com.tw

Shenzhen: 86-755-83298787
Shenzhen: 86-755-83640655
Shenzhen: 100y@163.com

Shanghai: 86-21-54151736
Shanghai: 86-21-64605107
Shanghai: 100y-1@163.com