

Power Supplies & UPS

25-50W Dual Output Switching Power Supply

Detailed product specifications are available on: us.100y.com.tw



ID-50 Series

FEATURES:

- Low cost, high reliability.
- Compact size, light weight
- 105°C output capacitor.
- 100% full load burn-in test.
- International AC input range.
- Built in EMI filter, low ripple noise
- High efficiency, low working temperature.
- Soft-start circuit, limiting AC surge current.
- Short circuit, overload, over voltage protected

Input voltage range: 85~264VAC 47~63Hz; 120~370VDC
 AC CURRENT: 1A/115VAC 0.6A/230VAC
 INRUSH CURRENT (max.): Cold start 18A/115VAC 36A/230V
 LEAKAGE CURRENT: <3.5mA/240VAC
 WORKING TEMP.Humidity: -10 ~ +60°C(Refer to output load derating curve), 20%~90% RH
 SAFETY STANDARDS: Meet IEC950 Requirement(not apply for the mark)
 WITHSTAND VOLTAGE: I/P-O/P: 1.5KVAC I/P-FG: 1.5KVAC
 O/P-FG: 0.5KVAC
 Dimension: 159*97*38mm Case: 901

Part No.	Product No.	Manufacturer	Description	Output Volt./Current	Tol.(±)	Output Volt./Current	Tol.(±)
21006	ID-50A	MEAN WELL	MEAN WELL_50W Dual Isolated Output Switching Power Supply	5VDC/0~2A	±2%	5VDC/0.5~6A	±1%
21007	ID-50B	MEAN WELL	MEAN WELL_50W Dual Isolated Output Switching Power Supply	13VDC/0~2A	±2%	13.5VDC/0.3~2A	±1%
7562	ID-50C	MEAN WELL	MEAN WELL_50W Dual Isolated Output Switching Power Supply	27VDC/0~1A	±2%	27VDC/0.18~1A	±1%
21008	ID-50D	MEAN WELL	MEAN WELL_50W Dual Isolated Output Switching Power Supply	13VDC/0~2A	±2%	5VDC/1~5A	±1%

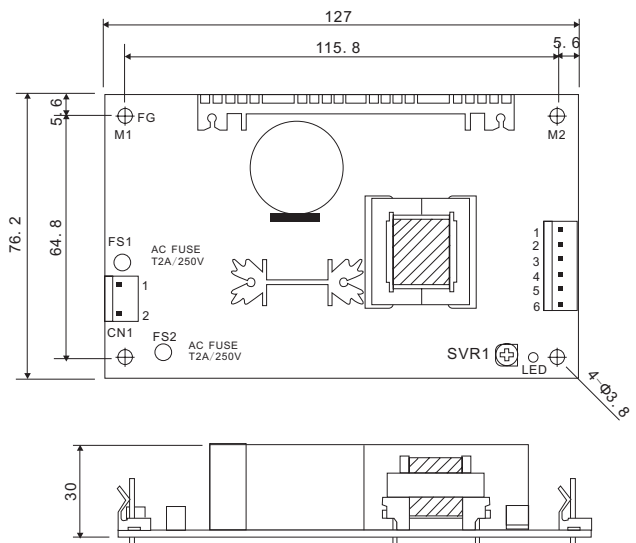


MPD-45 Series

FEATURES:

- Low cost, high reliability.
- Compact size, light weight
- 105°C output capacitor.
- 100% full load burn-in test.
- International AC input range.
- Built in EMI filter, low ripple noise
- High efficiency, low working temperature.
- Soft-start circuit, limiting AC surge current.
- Short circuit, overload, over voltage protected

Input voltage range: 90~264VAC 47~440Hz; 127~370VDC
 AC CURRENT: 1.2A/115VAC 0.7A/230VAC
 INRUSH CURRENT: Cold start 20A/115VAC 40A/230V
 LEAKAGE CURRENT: <0.3mA/264VAC
 WORKING TEMP.Humidity: -10 ~ +60°C(Refer to output load derating curve), 20%~90% RH
 SAFETY STANDARDS: UL2601-1, EN6060-1 Approved
 WITHSTAND VOLTAGE: I/P-O/P: 4KVAC I/P-FG: 1.5KVAC O/P-FG: 0.5KVAC
 Dimension: 127*76.2*30mm (L*W*H) PCB ONLY



Part No.	Product No.	Manufacturer	Description	Output Volt./Current	Tol.(±)	Output Volt./Current	Tol.(±)
16342	MPD-45A	MEAN WELL	MEAN WELL_45W Dual Output Medical Type	+5V/0.4~5.0A	±4%	+12V/0.2~2.5A	±7%
21141	MPD-45B	MEAN WELL	MEAN WELL_45W Dual Output Medical Type	+5V/0.4~5A	+/-4%	+24V/0.2~1.8A	+/-7%



NE Series

FEATURES:

- Universal AC input / Full range (Nes-100 AC input selectable by switch)
- Protections: Short circuit/OVP/OVP
- Cooling by free air convection
- Small size, high power density
- Low cost, high reliability
- 100% full load burn-in test
- 2 years warranty

AC input voltage range: 85~264VAC universal input (120~370VDC)
 AC inrush current (max.): Cold start, 40A at 230VAC
 Over load protection: 110%~150% hiccup mode, auto-recovery
 Withstand voltage: I/P-O/P: 3KVAC, I/P-FG: 1.5KVAC, O/P-FG: 0.5KVAC, 1minute
 Working temperature: -20~60°C(refer to the derating curve for different models)
 Safety standards: Design refer to UL60950-1, TUV EN60950-1
 EMC standards: EN55022 class B, EN61000-3-2, 3, EN61000-4-2, 3, 4 5, 6, 8, 11, ENV50204
 Connection: Terminal block for input and output
 Dimension (L*W*H) mm: 35W: 99x97x36 50W: 129x98x38

Part No.	Product No.	Manufacturer	Description	Output Volt./Current	Tol.(±)	Output Volt./Current	Tol.(±)
29955	NED-35A	MEAN WELL	MEAN WELL_35W Dual Output Switching Power Supply	12V/0.1~1.5A	±6%	5V/0.5~5.0A	±2%
29959	NED-35B	MEAN WELL	MEAN WELL_35W Dual Output Switching Power Supply	24V/0.2~1.3A	±6%	5V/0.5~4.0A	±2%
29960	NED-50A	MEAN WELL	MEAN WELL_50W Dual Output Switching Power Supply	12V/0.3~3.0A	±6%	5V/1.0~6.0A	±2%
29961	NED-50B	MEAN WELL	MEAN WELL_50W Dual Output Switching Power Supply	24V/0.2~2.0A	±6%	5V/1.0~6.0A	±2%

• We provide a wide range of products to development and maintenance engineers in all type of business



Taiwan: 886-3-5753170
 Shanghai: 021-54151736 Shenzhen: 0755-83298787

Centenary Materials
 Waiting for your phone call



T E L : Taiwan: 886-3-5753170
 F A X : Taiwan: 886-3-5753172
 E-mail: Taiwan: sale@100y.com.tw

Shenzhen: 86-755-83298787
 Shenzhen: 86-755-83640655
 Shenzhen: 100y@163.com

Shanghai: 86-21-54151736
 Shanghai: 86-21-64605107
 Shanghai: 100y-1@163.com