



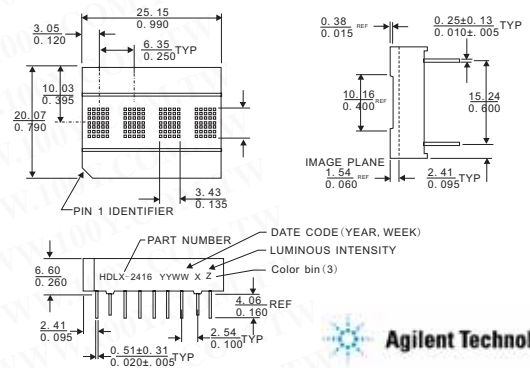
Dot matrix LED Display

Detailed product specifications are available on: us.100y.com.tw



FEATURES

- Enhanced drop-in replacement to HPDL-2416
- Smart Alphanumeric Display
- Built-in RAM, ASCDII Decoder, and LED Drive Circuitry
- CMOS IC for low power consumption
- Software controlled dimming levels and blank
- 128 ASCII Character set
- End-Stackable
- Categorized for luminous Intensity: yellow and green Ca-tergorized for color
- Low power and sunlight viewable AlGaAs Versions
- Wide Operating Temperature range: -40°C to +85°C
- Excellent ESD Protection
- Wide viewing angle (50° typ)



Part No.	Product No.	Manufacturer	Description	Wave Length (nm)	Device Size
33338	HDLG-2416	Agilent	Four Character 5.0 mm (0.2 inch) Smart 5 x 7 Alphanumeric Displays	568nm	5.0 mm
33339	HDLO-2416	Agilent	Four Character 5.0 mm (0.2 inch) Smart 5 x 7 Alphanumeric Displays	635nm	5.0 mm

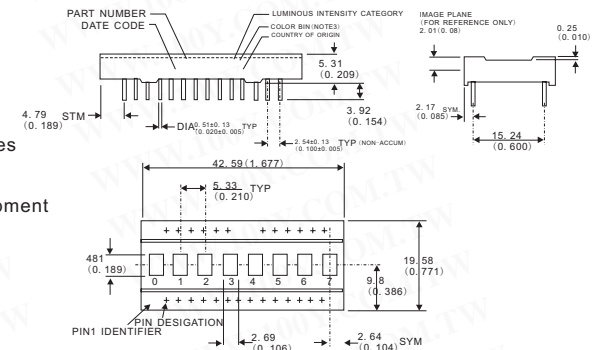


FEATURES

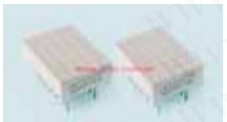
- X stackable (HDSP-21xx)
- XY stackable (HDSP-250x)
- 128 character ASCII decoder
- Programmable functions
- 16 user definable characters
- Multi-level dimming and blanking
- TTL compatible CMOS IC
- Wave solderable

APPLICATIONS

- Computer peripherals
- Industrial instrumentation
- Medical equipment
- Portable data entry devices
- Cellular phones
- Telecommunications equipment
- Test equipment



Part No.	Product No.	Manufacturer	Description	Wave Length (nm)	Vf@If=20mA	Liminous @If=10mA
33354	HDSP-2112	Agilent	Agilent Eight Character 5 mm and 7 mm Smart Alphanumeric Displays	626 nm		2.5 mcd
40473	HDSP-2502	Agilent	Eight Character 5 mm and 7 mm Smart Alphanumeric Displays	635nm	7.5mcd	



- 0.7" 5 x 7 LED Display
- Vf/@If=20mA: 2.2V
- Iv(ucd)@10mA: 5000ucd
- Device Size: 12.7W*17.82H*6.35D

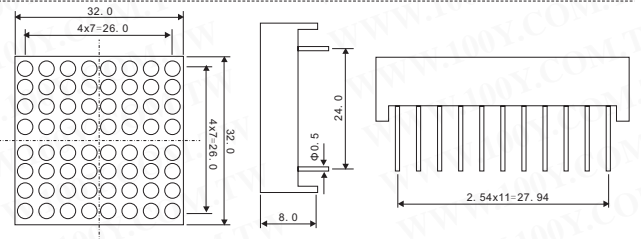


Part No.	Product No.	Manufacturer	Description	Wave Length (nm)	Vf/@If=20mA	Liminous @If=10mA	Device Size
10445	M0757RS-GW	JOINSCAN	0.7" 5*7 Dot Matrix LED Display/Common Anode	655	2.2V	5000ucd	12.7W*17.82H*6.35D



REMARK:

- Typical forward current 10~20mA, MAXIMUM forward current 25mA
- Solder temperature 1.6mm below seating plane less 5 seconds at 250°C +5°C -30°C
- Peak forward current per dice, duty cycle 1/10, 10KHZ MAXIMUM 120mA
- Operating temperature from -25°C to 85°C
- Blue color, pure green color and white color chip are static sensitive devices



Part No.	Product No.	Manufacturer	Description	Wave Length (nm)	Vf/@If=20mA	Liminous @If=10mA	Device Size
42507	M1386CS	JOINSCAN	8*8 Dot Matrix LED Display/Common Anode/Ultra-Bright Red	635	2.0	4000ucd	2.3" 60.2*60.2
6800	M1388-RSC	JOINSCAN	8*8 Dot Matrix LED Display/Common Anode/Ultra-Bright Red	695	2.2V	3000ucd	1.3" 32*32
7932	M1588RS	JOINSCAN	8*8 Dot Matrix LED Display/Common Anode/Ultra-Bright Red	695	2.2V	25000ucd	1.5" 38*38
7949	M2388C-BW	JOINSCAN	8*8 Dot Matrix LED Display/Common Anode/Orange, Green	635/665	2.0	4000ucd	2.3" 60.2*60.2
7947	M2388RS-BW	JOINSCAN	8*8 Dot Matrix LED Display/Common Anode/Ultra-Bright Red	635	2.0	25000ucd	2.3" 60.2*60.2



- Wave Length (nm): 695
- Vf/@If=20mA: 2.2V
- Liminous @If=10mA: 25000ucd
- Description: 5*7 Red cathod
- Device size: 0.7" 12.7*17.82



Part No.	Product No.	Manufacturer	Description	Wave Length (nm)	Vf/@If=20mA	Liminous @If=10mA	Device Size
7144	N0757RS-GW	JOINSCAN	5*7 Dot Matrix LED Display/Common Cathode	695	2.2V	25000ucd	0.7" 12.7*17.82

