

FIRE & SECURITY & CCTV

Weatherproof Xenon Beacons

Detailed product specifications are available on: us.100y.com.tw



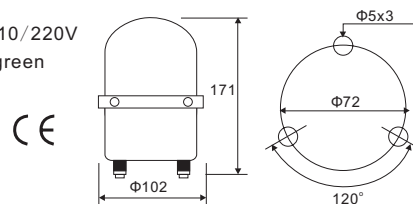
CM-110L-Y
CM-12L-Y
CM-220L-Y
CM-24L-Y



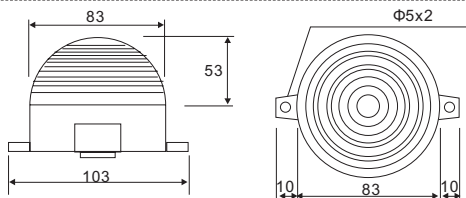
CM-24LBL

- CM-110L-B
- CM-110L-G
- CM-110L-R
- CM-12L-R
- CM-220L-R
- CM-24L-R

- Voltage: DC12/24V AC110/220V
- Color: red, yellow, blue, green

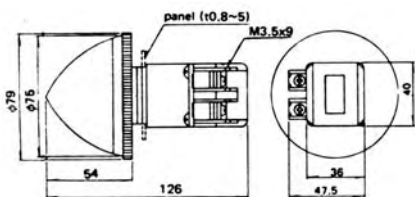


Part No.	Product No.	Description	Size(B, M, S)	Voltage	Color	Diameter * H(mm)
18439	CM-110L-B	Weatherproof Xenon Beacons	Small	110V/AC	BLUE	102*171
13068	CM-110L-G	Weatherproof Xenon Beacons	Small	110V/AC	GREEN	102*171
2868	CM-110L-R	Weatherproof Xenon Beacons	Small	110V/AC	RED	102*171
2869	CM-110L-Y	Weatherproof Xenon Beacons	Small	110V/AC	YELLOW	102*171
5773	CM-12L-R	Weatherproof Xenon Beacons	Small	12V/DC	RED	102*171
5743	CM-12L-Y	Weatherproof Xenon Beacons	Small	12V/DC	YELLOW	102*171
2871	CM-220L-R	Weatherproof Xenon Beacons	Small	220V/AC	RED	102*171
2870	CM-220L-Y	Weatherproof Xenon Beacons	Small	220V/A C	YELLOW	102*171
5772	CM-24L-R	Weatherproof Xenon Beacons	Small	24V/DC	RED	102*171
2872	CM-24L-Y	Weatherproof Xenon Beacons	Small	24V/DC	YELLOW	102*171
14775	CM-24LBL	Weatherproof Xenon Beacons	Small	24V/dc	BLUE	102*171



- Voltage: DC6/12/24V AC110/220V
- Color: red, yellow, blue, green, clear

Part No.	Product No.	Description	Size(B, M, S)	Voltage	Color	Diameter * H(mm)
17273	D300-110-R	Disco Flashlight	small	110Vac	Red	83.5*77mm

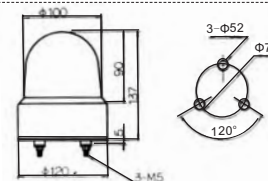


- Fixed aperture: ϕ 30m/m
- Rating voltage: 110VAC
- DOS shell: red
- Insulated resistance: 100M Ω (at 500VDC)
- Resistant voltage: 2, 000VAC 50/60 1minute

Part No.	Product No.	Description	Size(B, M, S)	Voltage	Color	Diameter * H(mm)
13163	TPLF-301-R	Disco Flashlight	Small	110/18V	Red	78*142mm



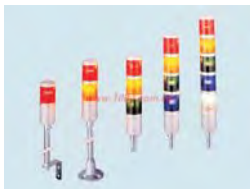
Bulb spec: 12V8W



Part No.	Product No.	Manufacturer	Description	Size(B, M, S)	Voltage	Color	Diameter * H(mm)
14781	TRM-220-R	TEND	Rolling light	Small	220V	Red	ψ 120*137

Stacking Beacons

Detailed product specifications are available on: us.100y.com.tw



FEATURES

- Domes for the assorted colors: available in red, yellow, blue, green and transparent
- Easy to repair: only to loose a screw for replacing the lenses or bulbs
- Only installing one tower light: it can show the different signals for the production flow of machine
- Two kinds of indications: by the styles of steady-burn (LT) or flashing (LTF).
- With elegant design: can be clearly seen the efficiency from any directions

Usage: suitable for automated plant and all kinds of automatized machines: robot, textile machines, injection molding machines, plastic extruding machines, etc.

To indicate assorted abnormal conditions in plant equipments or automatic production lines.
Suitable for game machines: pachinko etc.



Part No.	Product No.	Manufacturer	Description	Voltage
42009	S15-L57B	TEND	Φ 50mm/ Φ 60mm/ Φ 70mm 用 LED bulb	24V
42012	S15-L57G	TEND	LED bulb	24V
42007	S15-L57O	TEND	LED bulb	24V
42005	S15-L57R	TEND	LED bulb	24V
42014	S15-L57W	TEND	LED bulb	24V



T E L : Taiwan: 886-3-5753170
F A X : Taiwan: 886-3-5753172
E-mail: Taiwan: sale@100y.com.tw

Shenzhen: 86-755-83298787
Shenzhen: 86-755-83640655
Shenzhen: 100y@163.com

Shanghai: 86-21-54151736
Shanghai: 86-21-64605107
Shanghai: 100y-1@163.com