



# AMP Connectors + Terminals

Detailed product specifications are available on: [us.100y.com.tw](http://us.100y.com.tw)



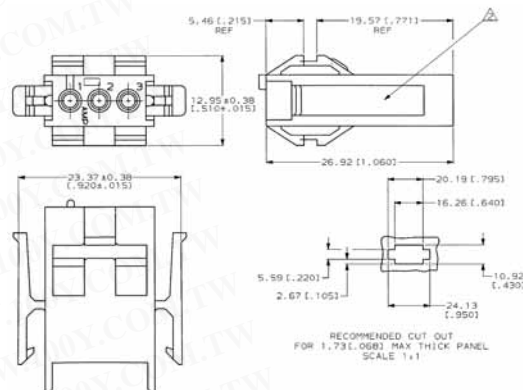
- SEARCHABLE FEATURES**
- Centerline, Matrix (mm [in]): 4.19 [ .165]
  - Contact layout: In-line
  - Housing type: receptacle (cap)

- OTHER PROPERTIES**
- Housing material: Nylon
  - Lock type: positive lock
  - Voltage (VAC): 250
  - Housing flammability rating: UL94V-0

**AMP**



Unit: mm



Part No.	Product No.	Manufacturer	Description	Pins/Angle	Male/Female
17503	1-0640507-0	AMP	AMP_MINIATURE RECTANGULAR ELECTRICAL CONNECTOR CAP	2P	CAP
15111	1-0640508-0	AMP	AMP_MINIATURE RECTANGULAR ELECTRICAL CONNECTOR PLUG	3P	CAP
30154	1-0640509-0	AMP	AMP_MINIATURE RECTANGULAR ELECTRICAL CONNECTOR CAP	4P	CAP
32032	1-0640510-0	AMP	AMP_MINIATURE RECTANGULAR ELECTRICAL CONNECTOR CAP	6P	CAP
32033	1-0640511-0	AMP	AMP_MINIATURE RECTANGULAR ELECTRICAL CONNECTOR CAP	9P	CAP



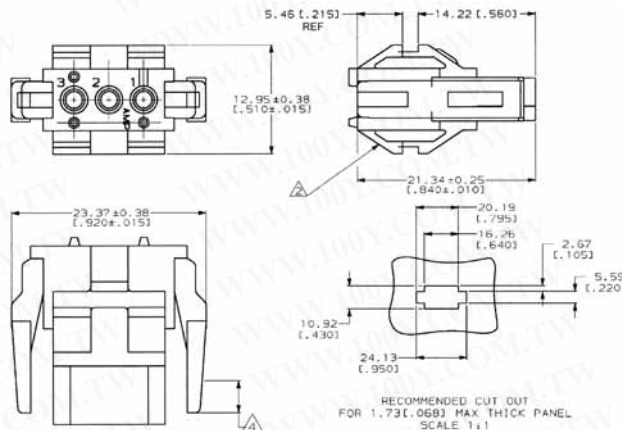
- SEARCHABLE FEATURES**
- Centerline, Matrix (mm [in]): 4.19 [ .165]
  - Contact layout: In-line
  - Housing type: receptacle (cap)

- OTHER PROPERTIES**
- Housing material: Nylon
  - Lock type: positive lock
  - Voltage (VAC): 250
  - Housing flammability rating: UL94V-0

**AMP**



Unit: mm



Part No.	Product No.	Manufacturer	Description	Pins/Angle	Male/Female
30216	1-0640517-0	AMP	AMP_MINIATURE RECTANGULAR ELECTRICAL CONNECTOR PLUG	2P	PLUG
15112	1-0640518-0	AMP	AMP_MINIATURE RECTANGULAR ELECTRICAL CONNECTOR PLUG	3P	PLUG
32031	1-0640519-0	AMP	AMP_MINIATURE RECTANGULAR ELECTRICAL CONNECTOR PLUG	4P	PLUG
32288	1-0640520-0	AMP	AMP_MINIATURE RECTANGULAR ELECTRICAL CONNECTOR PLUG	6P	PLUG
32034	1-0640521-0	AMP	AMP_MINIATURE RECTANGULAR ELECTRICAL CONNECTOR PLUG	9P	PLUG



**DESCRIPTION**

This head is used to terminate unstripped wires in two type of MTA-100 closed-end receptacle assemblies: connectors with lock (ramp), and connectors with polarizing tabs and lock. slotted contact for insulation displacement termination are preassembled on 2.54 [ .100] centerlines in each color-coded housing for a specific wire size. Refer to figure 2 and to application specification 114-1019 for further details

**AMP**

Part No.	Product No.	Manufacturer	Description
24672	58246-1	AMP	0-640442-6 receptacle connectors



- Tolerances apply to solder side of board
- Plastic flash permitted in this area
- Material: header-thermoplastic polyester  
UL94V-0 (Natural)  
post-copper alloy (tin-plated)
- Posts to be measured when strip is held flat

**AMP**

Part No.	Product No.	Manufacturer	Description	Pins/Angle	Type
40334	640456-6	AMP	6P MTA 100 Header	6P	MAT-100

