



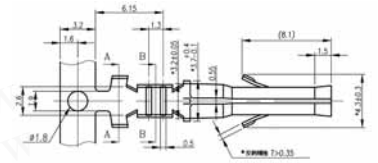
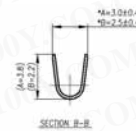
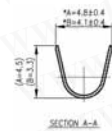
# 7005, 7006 Series Mate-N-Lok Male, Female Connector & Crimp Terminal

Detailed product specifications are available on: [us.100y.com.tw](http://us.100y.com.tw)



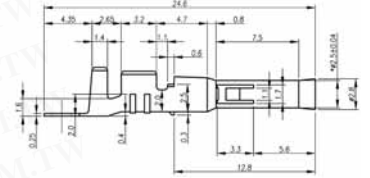
**SPECIFICATIONS**

- Current rating: 15A AC, DC Max
- Voltage rating: 300V AC, DC
- Temperature range: -25°C to +90°C



Unit: mm

Part No.	Product No.	Description	Pins	Recive Head/YES	Input Head/YES	Packing
12547	T-7006-B3T101	7006T2 Brass C2680R-H	Tin Lead-Plated Terminal	--	--	5000PCS/R



- Terminal:** Material: 0. 25T brass  
 Plating: copper-undercoated, tin-plated  
 Wire range: suitable for AWG#16~26

- Housing:** Material: Nylon 66, UL94V-0, V-2  
 Pitch: 6. 2 (.244")  
 Circuits: 1, 2, 3, 4, 6, 9, 12, 15  
 Receptacle housing mates with PT 7005  
 Plug housing mates with Pt7006

Part No.	Product No.	Description	Recive Head/YES	Input Head/YES	Packing
39746	T-7006-B3TT00	7006T1 Brass C2680R-H	--	--	5000PCS/R

# 7011, 7012 Series

Detailed product specifications are available on: [us.100y.com.tw](http://us.100y.com.tw)

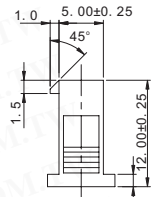
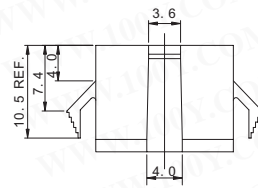
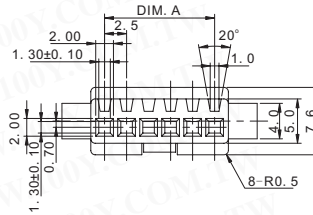


**TERMINAL**

- Material: 0. 2T brass
- Plating: copper-undercoated, tin-plated
- Wire range: suitable for AWG#22-#26

**HOUSING**

- Material: Nylon 66, UL94V-0, V-2
- Pitch: 2. 5 (. 098")
- Post: brass, 0. 64 (. 025") square pin
- Circuits: 2-18
- Receptacle housing mates with PT 7001
- Plug housing mates with PT 7012



Unit: mm



Part No.	Product No.	Description	Pins	M/F Socket/ Head	Pitch	Input Head/YES
41363	7012 12P	7012PH	12P	Male	2.5mm	YES
41362	P-7011-N2B	7011 12PH	12P	Male	2.5mm	YES
27770	P-7012-N2B10200	7012PH	2P	Male	2.5mm	YES
27771	P-7012-N2B10300	7012PH Housing	3P	Male	2.5mm	YES
14248	P-7012-N2B10400	7012PH	4P	Male	2.5mm	YES
14249	P-7012-N2B10600	7012PH Housing	6P	Male	2.5mm	YES
28679	P-7012-N2B10800	7012PH Housing	8P	Male	2.5mm	YES

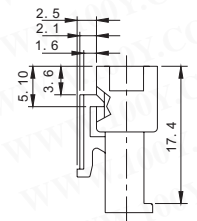
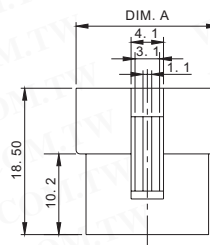
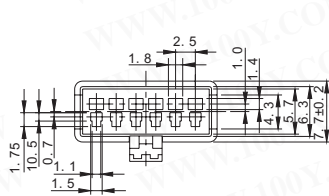


**TERMINAL**

- Material: 0. 2T brass
- Plating: copper-undercoated, tin-plated
- Wire range: suitable for AWG#22-#26

**HOUSING**

- Material: Nylon 66, UL94V-0, V-2
- Pitch: 2. 5 (. 098")
- Post: brass, 0. 64 (. 025") square pin
- Circuits: 2-18
- Receptacle housing mates with PT 7001
- Plug housing mates with PT 7012



Unit: mm



Part No.	Product No.	Description	Pins	M/F Socket/ Head	Pitch	Recive Head/YES	Input Head/YES
27769	P-7011-N2B10200	7011RH Housing	2P	Female	2.5mm	YES	NO
16918	P-7011-N2B10300	7011RH Housing	3P	Female	2.5mm	YES	NO
14245	P-7011-N2B10400	7011RH Housing	4P	Female	2.5mm	YES	NO
14246	P-7011-N2B10600	7011RH Hosing	6P	Female	2.5mm	YES	NO
28678	P-7011-N2B10800	7011RH Hosing	8P	Female	2.5mm	YES	NO

