

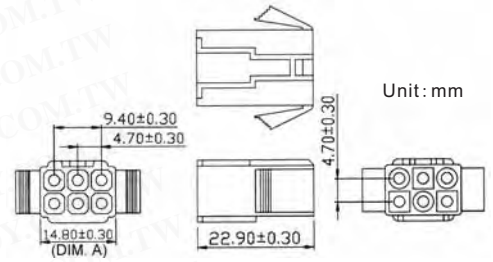


7007/7008 Series Power Connector + Terminal

Detailed product specifications are available on: us.100y.com.tw

Terminal: Material: 0. 25T brass
 Plating: copper-Undercoated, Tin-plated
 Wire range: suitable for AWG#16~26

Housing: Material: Nylon 66, UL94V-0 V-2
 Pitch: 4. 5 (. 177")
 Circuits: 2, 3, 4, 6, 9, 12, 15
 Receptacle housing mates with Pt7007
 Plug housing mates with PT7008



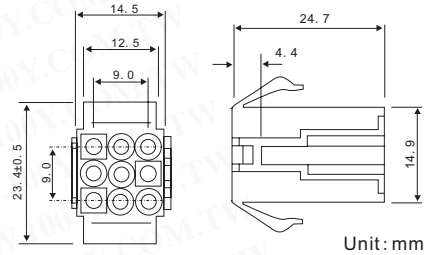
P-7007-N2W206B1

Part No.	Product No.	DIM. A
12724	P-7007-N2W206B1	19. 12mm

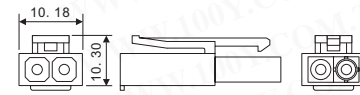
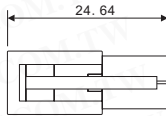
Part No.	Product No.	Description	M/F Socket/ Head	Pins	Pitch
12724	P-7007-N2W206B1	NYLON 66 UL94V-2	Female Plug	6P	4.5m



- Material: Nylon 66 UL94V-2
- Circuits: 2, 3, 4, 6, 9, 12, 15
- Mates with 7007T male terminal



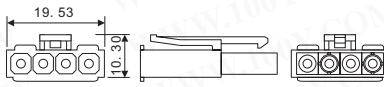
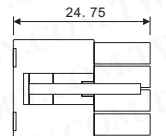
Part No.	Product No.	Description	M/F Socket/ Head	Pins	Pitch
16217	P-7007-N2W309B1	Nylon 66 UL94V-2	Female Plug	9P	4.5mm
16218	P-7008-N2W30900	Nylon 66 UL94V-2	Male Plug	9P	4.5mm



Terminal: Material: 0. 25T brass
 Plating: copper-Undercoated, Tin-plated
 Wire range: suitable for AWG#16~26

Housing: Material: Nylon 66, UL94V-0 V-2
 Pitch: 4. 5 (. 177")

Circuits: 2, 3, 4, 6, 9, 12, 15
 Receptacle housing mates with Pt7007
 Plug housing mates with PT7008



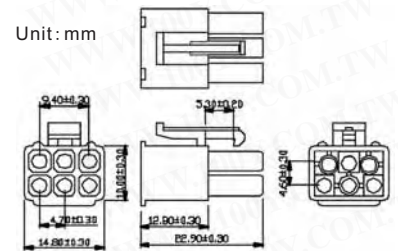
Unit: mm

Part No.	Product No.	Description	M/F Socket/ Head	Pins	Pitch
12492	P-7008-N2W10200	Nylon 66 UL94V-2	Male Plug	2P	4.5mm
12493	P-7008-N2W10400	Nylon 66 UL94V-2	Male Plugs	4P	4.5mm



Terminal: Material: 0. 25T brass
 Plating: copper-Undercoated, Tin-plated
 Wire range: suitable for AWG#16~26

Housing: Material: Nylon 66, UL94V-0 V-2
 Pitch: 4. 5 (. 177")
 Circuits: 2, 3, 4, 6, 9, 12, 15
 Receptacle housing mates with Pt7007
 Plug housing mates with PT7008

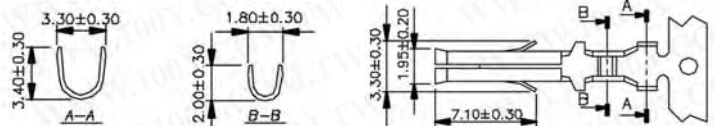


Part No.	Product No.	Description	M/F Socket/ Head	Pins	Pitch
12723	P-7008-N2W20600	NYLON 66 UL94V-2	Male Plug	6P	4.8m

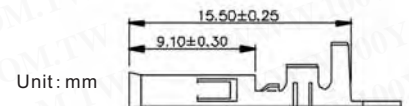


Terminal: Material: 0. 25T brass
 Plating: copper-Undercoated, Tin-plated
 Wire range: suitable for AWG#16~26

Housing: Material: Nylon 66, UL94V-0 V-2
 Pitch: 4. 5 (. 177")
 Circuits: 2, 3, 4, 6, 9, 12, 15
 Receptacle housing mates with Pt7007
 Plug housing mates with PT7008

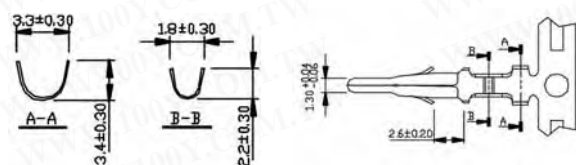


Part No.	Product No.	Description	Packing
12496	T-7007-B3TT00	Brass C2680R-H Tin Lead -Plated Terminal	5000PCS/R



Terminal: Material: 0. 25T brass
 Plating: copper-Undercoated, Tin-plated
 Wire range: suitable for AWG#16~26

Housing: Material: Nylon 66, UL94V-0 V-2
 Pitch: 4. 5 (. 177")
 Circuits: 2, 3, 4, 6, 9, 12, 15
 Receptacle housing mates with Pt7007
 Plug housing mates with PT7008



Part No.	Product No.	Description	Pitch	Packing
12497	T-7008-B3TT00	Brass C2680R-H Tin Lead -Plated Terminal	4.5mm	5000PCS/R

