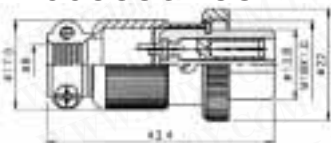


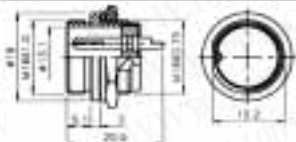


# PLK-16 Series- Industrial Circular Connectors & Accessories

Detailed product specifications are available on: [us.100y.com.tw](http://us.100y.com.tw)



Part No.	Product No.	Manufacturer	Description	Shell Size	Pins	M/F Plug/Socket	Rate Current/Voltage
3187	PLK-162-P	PLT	PLK-16 Series -Industrial Circular Connectors	16mm	2P	Female Plug	5A/125V
4828	PLK-163-P	PLT	PLK-16 Series -Industrial Circular Connectors	16mm	3P	Female Plug	5A/125V
6270	PLK-164-P	PLT	PLK-16 Series -Industrial Circular Connectors	16mm	4P	Female Plug	5A/125V
7981	PLK-165-P	PLT	PLK-16 Series -Industrial Circular Connectors	16mm	5P	Female Plug	5A/125V

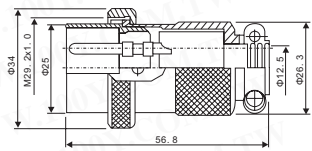


Part No.	Product No.	Manufacturer	Description	Shell Size	Pins	M/F Plug/Socket	Rate Current/Voltage
3194	PLK-162-R	PLT	PLK-16 Series -Industrial Circular Connectors	16mm	2P	Male Socket	5A/125V
6242	PLK-163-R	PLT	PLK-16 Series -Industrial Circular Connectors	16mm	3P	Male Socket	5A/125V
3191	PLK-164-R	PLT	PLK-16 Series -Industrial Circular Connectors	16mm	4P	Male Socket	5A/125V
12239	PLK-165-R	PLT	PLK-16 Series -Industrial Circular Connectors	16	5P	Male Socket	5A/125V

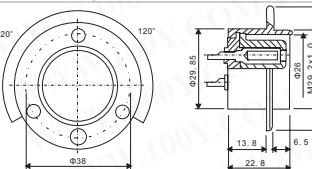
No. of contacts	2	3	4	5			
Contacts Configuration							
Rated current/voltage	5A 125V	5A 125V	5A 125V	5A 125V			
Operation limit voltage (AC. V. rms)	200	200	200	200			
Withstanding voltage (AC. V. rms) 1 minute	1000	1000	1000	1000			
Insulation resistance (MΩ MIN. ) at DC 500V	1000	1000	1000	1000			
Contact resistance (MΩ MAX. ) at DC 1A	3	3	3	3			
Pin diameter (Φmm)	1.5	1.5	1.5	1.3			

# PLK-30 Series- Industrial Circular Connectors & Accessories

Detailed product specifications are available on: [us.100y.com.tw](http://us.100y.com.tw)



Part No.	Product No.	Manufacturer	Description	Pins	M/F Plug/Socket	Rate Current/Voltage	Shell Size
28464	PLK-304-PM	PLT	PLK-30 Series -Industrial Circular Connectors	4P	Male Socket	15A / 250V	30
28830	PLK-307-PM	PLT	PLK-30 Series -Industrial Circular Connectors	7P	Male Socket	15A / 250V	30



Part No.	Product No.	Manufacturer	Description	Pins	M/F Plug/Socket	Rate Current/Voltage	Shell Size
28465	PLK-304-RF	PLT	PLK-30Series -Industrial Circular Connectors	4P	Female Plug	15A / 250V	30
28829	PLK-307-FR	PLT	PLK-30Series -Industrial Circular Connectors	7P	Female Plug	15A / 250V	30

No. of contacts	4	7
Contacts Configuration		
Rated current/voltage	15A 250V	15A 250V
Operation limit voltage (AC. V. rms)	400	400
Withstanding voltage (AC. V. rms) 1 minute	2000	1800
Insulation resistance (MΩ MIN. ) at DC 500V	2000	2000
Contact resistance (MΩ MAX. ) at DC 1A	3	3
Pin diameter (Φmm)	3	2

- We provide a wide range of products to development and maintenance engineers in all type of business
- If you cannot find the components you want on the catalogue, please call us.

Taiwan: 886-3-5753170  
Shanghai: 021-54151736

Shenzhen: 0755-83298787  
**Centenary Materials**  
Waiting for your phone call

