



# AUDIO & VIDEO CONNECTORS

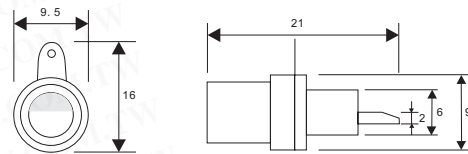
## RCA Sockets

Detailed product specifications are available on: [us.100y.com.tw](http://us.100y.com.tw)



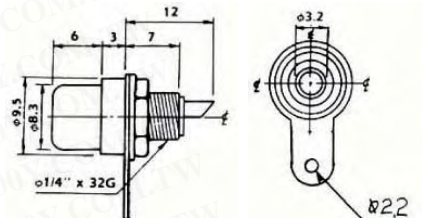
Color: White, Yellow  
Material: tinned

Part No.	Product No.	Description	Color	Material
3736	2014-W	RCA Sockets	White	Nickel Plated
15622	2014-Y	RCA Sockets	Yellow	Nickel Plated



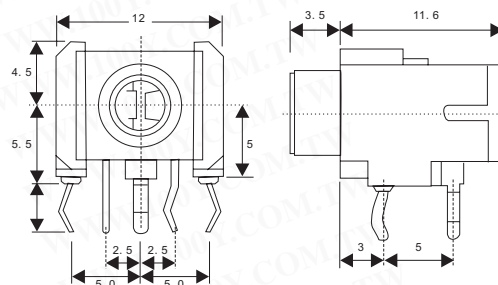
Color: Red, Black, Yellow, White Insulating piece x 2  
Material: gold-plated

Part No.	Product No.	Description	Color	Material
3734	2014A-B	RCA Sockets	Black	Gold-Plated
3735	2014A-R	RCA Sockets	Red	Gold-Plated
15623	2014A-W	RCA Socket	White	Gold-Plated
3733	2014A-Y	RCA Sockets	Yellow	Gold-Plated



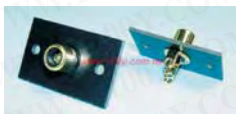
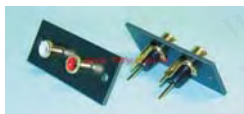
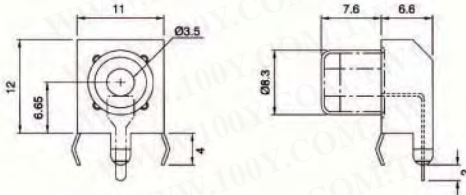
Color: White, Yellow, Black  
Material: tinned

Part No.	Product No.	Description	Color	Material
12252	2015-B	RCA PCB Mounting Socket	Black	Tin-Plated
3740	2015-W	RCA PCB Mounting Sockets	White	Tin-Plated
3739	2015-Y	RCA Sockets	Yellow	Tin-Plated



Color: Red, Yellow, Black  
Material: tinned

Part No.	Product No.	Description	Color	Material
8076	2016-B	PCB Mounting 90° RCA Sockets	Black	Tin-Plated
8077	2016-R	PCB Mounting 90° RCA Sockets	Red	Tin-Plated
3819	KY-006-1Y-L	RCA 90° PCB Mounting Sockets	Yellow	Tin-Plating



Material: PU gold-plated  
Color: Red, White  
22x25mm, 48mm c/c mtg. holes  
Phenolic insulated dual RCA jacks



Part No.	Product No.	Description	Color	Material
3738	3013A	PU Socket (Welding)	Black	PU Gold-Plating
22441	3014A	RCA Gold-Plated 2P PU	White,Red	PU Gold-Plated
11809	3015A	PU+RCA Gold-Plated Sockets 3P	Yellow,White,Red	PU Gold-Plated
10875	3017A	RCA PU Sockets	Red/White	PU Gold-Plated



### ELECTRICAL SPECIFICATION

- Contact resistance: 30m ohm max. At ac 100mA max. 1KHz
- Insulation resistance: 100M ohm min. At 500V DC
- Durability (life test): 400 cycles
- Dielectric withstanding voltage: 500VAC at 600Hz for 1 minute
- Insertion force: 0. 3~3. 0kg
- Extraction force: 0. 3~3. 0kg

### MATERIAL

- Housing: Thermoplastic
- Barrel: copper alloy
- Terminal pin: copper alloy
- Front metal shield: copper alloy
- Spring shield: stainless

Part No.	Product No.	Description	Color	Material
11498	RJ-1515-1(B)	RCA PCB Mounting Sockets	Black	Tin-Plated
11497	RJ-1515-1R	RCA PCB Mounting Sockets	Red	Tin-Plated
29056	RJ-1515-1W	RCA PCB Mounting Sockets	White	Tin-Plated
29055	RJ-1515-1Y-L	RCA PCB Mounting Sockets	Yellow	Tin-Plated

